



ELECTRONIC COPY

LABORATORY GROWN DIAMOND REPORT

May 20, 2024	
IGI Report Number	LG634421206
Description	LABORATORY GROWN DIAMOND
Shape and Cutting Style	OVAL BRILLIANT
Measurements	10.73 X 7.02 X 4.43 MM

GRADING RESULTS

Carat Weight	2.15 CARATS
Color Grade	E
Clarity Grade	VS 1

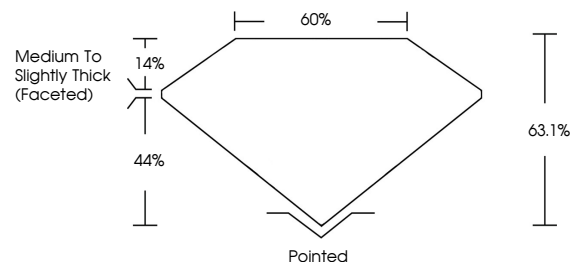
ADDITIONAL GRADING INFORMATION

Polish	EXCELLENT
Symmetry	EXCELLENT
Fluorescence	NONE
Inscription(s)	15 LG634421206

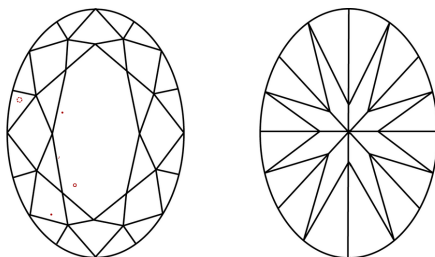
Comments: This Laboratory Grown Diamond was created by Chemical Vapor Deposition (CVD) growth process and may include post-growth treatment.
Type IIa

LG634421206
Report verification at lgi.org

PROPORTIONS

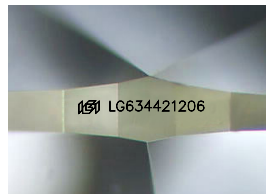


CLARITY CHARACTERISTICS



KEY TO SYMBOLS

Red symbols indicate internal characteristics.
Green symbols indicate external characteristics.



Sample Image Used

COLOR

D E F G H I J Faint Very Light Light

CLARITY

IF	WVS ¹⁻²	VS ¹⁻²	SI ¹⁻²	I ¹⁻³
Internally Flawless	Very Very Slightly Included	Very Slightly Included	Slightly Included	Included



© IGI 2020, International Gemological Institute

FD - 10 20

www.igi.org

DIAMOND REPORT



May 20, 2024	
IGI Report Number	LG634421206
Description	LABORATORY GROWN DIAMOND
Shape and Cutting Style	OVAL BRILLIANT
Measurements	10.73 X 7.02 X 4.43 MM

GRADING RESULTS

Carat Weight	2.15 CARATS
Color Grade	E
Clarity Grade	VS 1

ADDITIONAL GRADING INFORMATION

Polish	EXCELLENT
Symmetry	EXCELLENT
Fluorescence	NONE
Inscription(s)	 LG634421206

Comments: This Laboratory Grown Diamond was created by Chemical Vapor Deposition (CVD) growth process and may include post-growth treatment.
Type IIa



IG

May 20, 2024	2.15 CARATS
Report No. G5634421205	VS 1
Report No. G5634421205	65.1%
Report No. G5634421205	60%
Report No. G5634421205	Medium to Slightly Thick (Faceted)
Report No. G5634421205	Polished
Report No. G5634421205	EXCELLENT
Report No. G5634421205	EXCELLENT
Report No. G5634421205	NONE
Report No. G5634421205	see G5634421205

Comments:
This Laboratory Grown Diamond was created by Chemical Vapor Deposition (CVD) growth process and may include post-growth treatment.