



ELECTRONIC COPY

LG634421696
Report verification at igi.org



May 17, 2024

IGI Report Number **LG634421696**

Description **LABORATORY GROWN DIAMOND**

Shape and Cutting Style **ROUND BRILLIANT**

Measurements **11.15 - 11.24 X 6.62 MM**

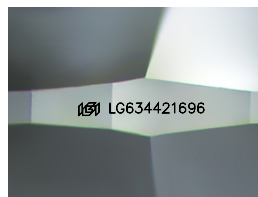
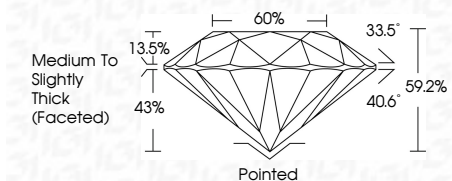
GRADING RESULTS

Carat Weight **5.07 CARATS**

Color Grade **G**

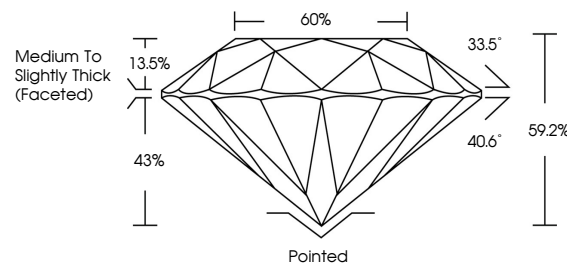
Clarity Grade **VVS 2**

Cut Grade **IDEAL**

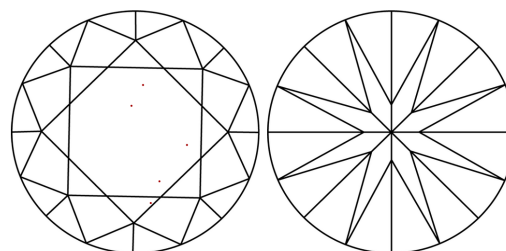


Sample Image Used

PROPORTIONS



CLARITY CHARACTERISTICS



KEY TO SYMBOLS

Red symbols indicate internal characteristics.
Green symbols indicate external characteristics.

COLOR

D E F G H I J Faint Very Light Light

CLARITY

| | | | | |
|---------------------|-----------------------------|------------------------|-------------------|------------------|
| IF | VVS ¹⁻² | VS ¹⁻² | SI ¹⁻² | I ¹⁻³ |
| Internally Flawless | Very Very Slightly Included | Very Slightly Included | Slightly Included | Included |

ADDITIONAL GRADING INFORMATION

Polish **EXCELLENT**

Symmetry **EXCELLENT**

Fluorescence **NONE**

Inscription(s) **IGI LG634421696**

Comments: This Laboratory Grown Diamond was created by Chemical Vapor Deposition (CVD) growth process and may include post-growth treatment. Type IIa



IGI



| | | | | | | | | | | | | | | | |
|--------------|---------------------------|-----------------|-------------------------|-------------|-------|-------|--------|-------|--------|------------------------------------|--------------|----------------|---|------|-----------------|
| May 17, 2024 | IGI Report No LG634421696 | ROUND BRILLIANT | 11.15 - 11.24 X 6.62 MM | 5.07 CARATS | G | VVS 2 | IDEAL | 60% | 59.2% | Medium To Slightly Thick (Faceted) | Pointed | EXCELLENT | EXCELLENT | NONE | IGI LG634421696 |
| IGI | Carat Weight | Color Grade | Clarity Grade | Cut Grade | Depth | Table | Girdle | Culet | Polish | Symmetry | Fluorescence | Inscription(s) | Comments: This Laboratory Grown Diamond was created by Chemical Vapor Deposition (CVD) growth process and may include post-growth treatment. Type IIa | | |