



**ELECTRONIC COPY**

LG634426895  
Report verification at [igi.org](http://igi.org)



May 16, 2024  
IGI Report Number **LG634426895**

Description **LABORATORY GROWN DIAMOND**

Shape and Cutting Style **CUT CORNERED  
RECTANGULAR MODIFIED  
BRILLIANT**

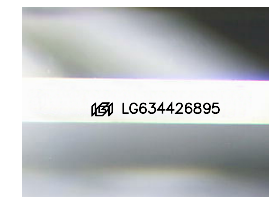
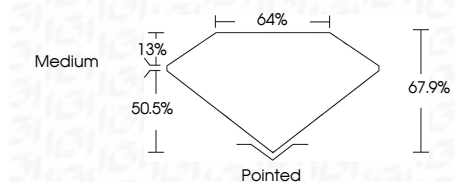
Measurements **11.35 X 7.81 X 5.30 MM**

**GRADING RESULTS**

Carat Weight **4.08 CARATS**

Color Grade **FANCY VIVID BLUE**

Clarity Grade **VS 2**



Sample Image Used

**ADDITIONAL GRADING INFORMATION**

Polish **EXCELLENT**

Symmetry **EXCELLENT**

Fluorescence **NONE**

Inscription(s) **IGI LG634426895**

Comments: This Laboratory Grown Diamond was created by Chemical Vapor Deposition (CVD) growth process. Indications of post-growth treatment.



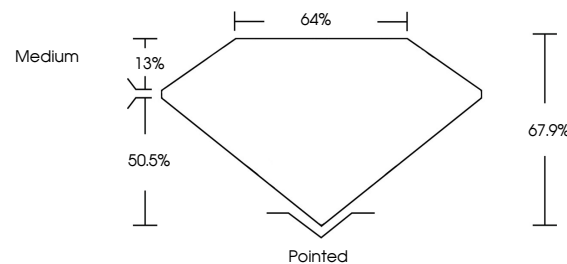
**IGI**

May 16, 2024  
IGI Report No LG634426895  
CUT CORNERED RECT. MODIFIED BRILLIANT  
4.08 CARATS  
FANCY VIVID BLUE  
VS 2  
50.5%  
67.9%  
13%  
64%  
Medium  
Pointed  
EXCELLENT  
EXCELLENT  
NONE  
IGI LG634426895

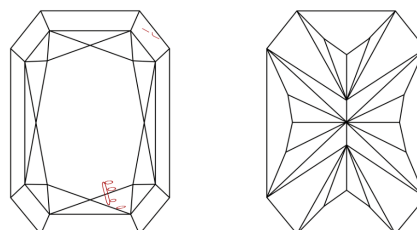
Comments: This Laboratory Grown Diamond was created by Chemical Vapor Deposition (CVD) growth process. Indications of post-growth treatment.



**PROPORTIONS**



**CLARITY CHARACTERISTICS**



**KEY TO SYMBOLS**

Red symbols indicate internal characteristics.  
Green symbols indicate external characteristics.

**COLOR**

D E F G H I J Faint Very Light Light

**CLARITY**

IF	VS <sup>1-2</sup>	VS <sup>1-2</sup>	SI <sup>1-2</sup>	I <sup>1-3</sup>
Internally Flawless	Very Very Slightly Included	Very Slightly Included	Slightly Included	Included