



ELECTRONIC COPY

LABORATORY GROWN DIAMOND REPORT

May 15, 2024
 IGI Report Number **LG634432013**
 Description **LABORATORY GROWN DIAMOND**
 Shape and Cutting Style **PRINCESS CUT**
 Measurements **5.97 X 5.93 X 4.23 MM**

GRADING RESULTS

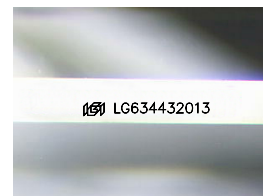
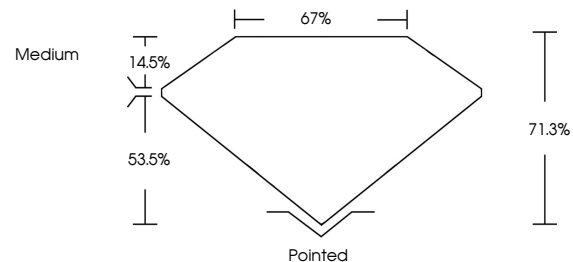
Carat Weight **1.34 CARAT**
 Color Grade **H**
 Clarity Grade **VS 2**

ADDITIONAL GRADING INFORMATION

Polish **EXCELLENT**
 Symmetry **VERY GOOD**
 Fluorescence **NONE**
 Inscription(s) **IGI LG634432013**

Comments: This Laboratory Grown Diamond was created by Chemical Vapor Deposition (CVD) growth process and may include post-growth treatment. Type IIa

PROPORTIONS



Sample Image Used

COLOR

D E F G H I J Faint Very Light Light

CLARITY

IF	VS ¹⁻²	VS ¹⁻²	SI ¹⁻²	I ¹⁻³
Internally Flawless	Very Very Slightly Included	Very Slightly Included	Slightly Included	Included



May 15, 2024
 IGI Report Number **LG634432013**
 Description **LABORATORY GROWN DIAMOND**
 Shape and Cutting Style **PRINCESS CUT**
 Measurements **5.97 X 5.93 X 4.23 MM**

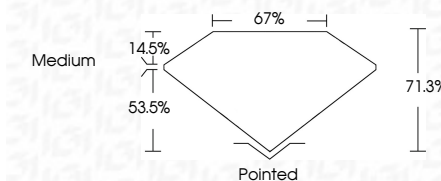
GRADING RESULTS

Carat Weight **1.34 CARAT**
 Color Grade **H**
 Clarity Grade **VS 2**

ADDITIONAL GRADING INFORMATION

Polish **EXCELLENT**
 Symmetry **VERY GOOD**
 Fluorescence **NONE**
 Inscription(s) **IGI LG634432013**

Comments: This Laboratory Grown Diamond was created by Chemical Vapor Deposition (CVD) growth process and may include post-growth treatment. Type IIa



IGI

May 15, 2024
 IGI Report No. **LG634432013**
PRINCESS CUT

5.97 X 5.93 X 4.23 MM

Carat Weight **1.34 CARAT**
 Color Grade **H**
 Clarity Grade **VS 2**
 Depth **53.5%**
 Table **14.5%**
 Girdle **67%**
 Medium

Culet **Pointed**
 Polish **EXCELLENT**
 Symmetry **VERY GOOD**
 Fluorescence **NONE**
 Inscription(s) **IGI LG634432013**

Comments: This Laboratory Grown Diamond was created by Chemical Vapor Deposition (CVD) growth process and may include post-growth treatment. Type IIa