



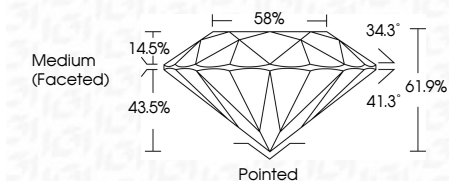
ELECTRONIC COPY

LG634432031 Report verification at igi.org



May 13, 2024 IGI Report Number LG634432031 Description LABORATORY GROWN DIAMOND Shape and Cutting Style ROUND BRILLIANT Measurements 6.59 - 6.64 X 4.09 MM

GRADING RESULTS Carat Weight 1.09 CARAT Color Grade G Clarity Grade VVS 2 Cut Grade IDEAL



ADDITIONAL GRADING INFORMATION Polish EXCELLENT Symmetry EXCELLENT Fluorescence NONE Inscription(s) LG634432031 Comments: This Laboratory Grown Diamond was created by Chemical Vapor Deposition (CVD) growth process and may include post-growth treatment. Type IIa

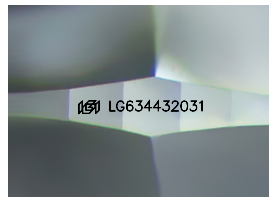
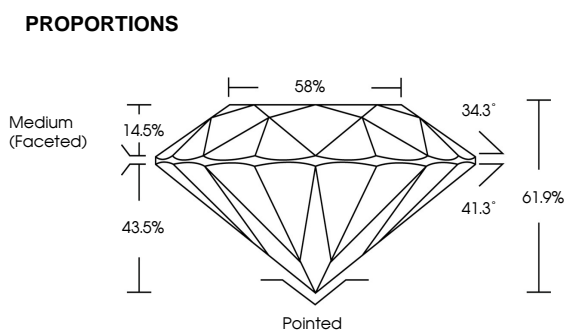


May 13, 2024 IGI Report No LG634432031 ROUND BRILLIANT 6.59 - 6.64 X 4.09 MM 1.09 CARAT G VVS 2 IDEAL 61.9% 58% Medium (Faceted) Pointed EXCELLENT EXCELLENT NONE NONE LG634432031

Comments: This Laboratory Grown Diamond was created by Chemical Vapor Deposition (CVD) growth process and may include post-growth treatment. Type IIa

May 13, 2024 IGI Report Number LG634432031 Description LABORATORY GROWN DIAMOND Shape and Cutting Style ROUND BRILLIANT Measurements 6.59 - 6.64 X 4.09 MM GRADING RESULTS Carat Weight 1.09 CARAT Color Grade G Clarity Grade VVS 2 Cut Grade IDEAL ADDITIONAL GRADING INFORMATION Polish EXCELLENT Symmetry EXCELLENT Fluorescence NONE Inscription(s) LG634432031

Comments: This Laboratory Grown Diamond was created by Chemical Vapor Deposition (CVD) growth process and may include post-growth treatment. Type IIa



Sample Image Used

COLOR scale: D, E, F, G, H, I, J, Faint, Very Light, Light

CLARITY scale: IF, VS 1-2, VS 1-2, SI 1-2, I 1-3; Internally Flawless, Very Very Slightly Included, Very Slightly Included, Slightly Included, Included

