



ELECTRONIC COPY

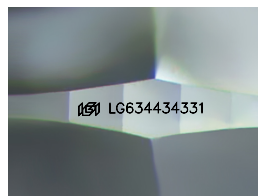
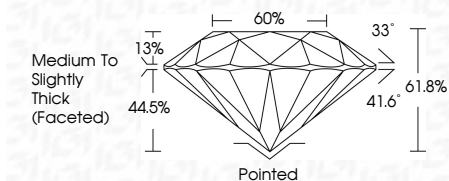
LG634434331
Report verification at igi.org



May 14, 2024
IGI Report Number LG634434331
Description LABORATORY GROWN DIAMOND
Shape and Cutting Style ROUND BRILLIANT
Measurements 7.23 - 7.26 X 4.47 MM

GRADING RESULTS

Carat Weight 1.47 CARAT
Color Grade G
Clarity Grade VS 1
Cut Grade EXCELLENT



Sample Image Used

ADDITIONAL GRADING INFORMATION

Polish EXCELLENT
Symmetry EXCELLENT
Fluorescence NONE
Inscription(s) IGI LG634434331
Comments: This Laboratory Grown Diamond was created by Chemical Vapor Deposition (CVD) growth process and may include post-growth treatment. Type IIa



IGI

May 14, 2024
IGI Report No LG634434331
ROUND BRILLIANT
7.23 - 7.26 X 4.47 MM
1.47 CARAT
Color Grade G
Clarity Grade VS 1
Depth 61.8%
Table 60%
Medium To Slightly Thick (Faceted)
Cutler Pointed
Polish EXCELLENT
Symmetry EXCELLENT
Fluorescence NONE
Inscriptions(s) IGI LG634434331
Comments: This Laboratory Grown Diamond was created by Chemical Vapor Deposition (CVD) growth process and may include post-growth treatment. Type IIa

LABORATORY GROWN DIAMOND REPORT

May 14, 2024
IGI Report Number LG634434331
Description LABORATORY GROWN DIAMOND
Shape and Cutting Style ROUND BRILLIANT
Measurements 7.23 - 7.26 X 4.47 MM

GRADING RESULTS

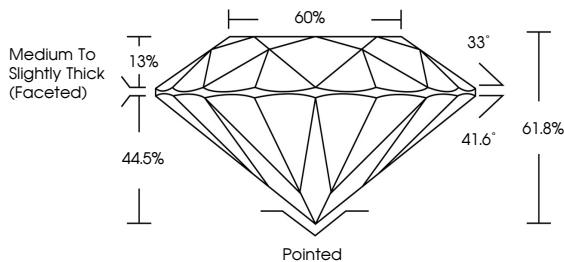
Carat Weight 1.47 CARAT
Color Grade G
Clarity Grade VS 1
Cut Grade EXCELLENT

ADDITIONAL GRADING INFORMATION

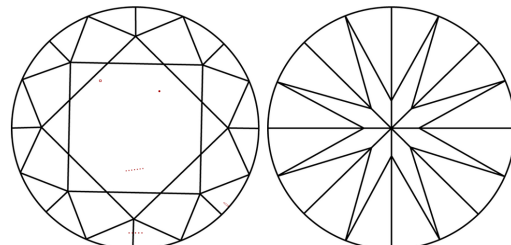
Polish EXCELLENT
Symmetry EXCELLENT
Fluorescence NONE
Inscription(s) IGI LG634434331

Comments: This Laboratory Grown Diamond was created by Chemical Vapor Deposition (CVD) growth process and may include post-growth treatment. Type IIa

PROPORTIONS



CLARITY CHARACTERISTICS



KEY TO SYMBOLS

Red symbols indicate internal characteristics.
Green symbols indicate external characteristics.

COLOR

D E F G H I J Faint Very Light Light

CLARITY

IF VS 1-2 VS 1-2 SI 1-2 I 1-3
Internally Flawless Very Very Slightly Included Very Slightly Included Slightly Included Included

