



**ELECTRONIC COPY**

LG634435385  
Report verification at igi.org



May 16, 2024  
IGI Report Number **LG634435385**  
Description **LABORATORY GROWN DIAMOND**  
Shape and Cutting Style **CUT CORNERED  
RECTANGULAR MODIFIED  
BRILLIANT**  
Measurements **8.38 X 5.78 X 3.91 MM**  
**GRADING RESULTS**  
Carat Weight **1.73 CARAT**  
Color Grade **G**  
Clarity Grade **VS 2**  
Cut Grade **VERY GOOD**

**LABORATORY GROWN DIAMOND REPORT**

May 16, 2024  
IGI Report Number **LG634435385**  
Description **LABORATORY GROWN DIAMOND**  
Shape and Cutting Style **CUT CORNERED RECTANGULAR  
MODIFIED BRILLIANT**  
Measurements **8.38 X 5.78 X 3.91 MM**

**GRADING RESULTS**

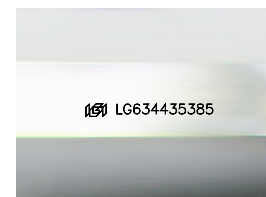
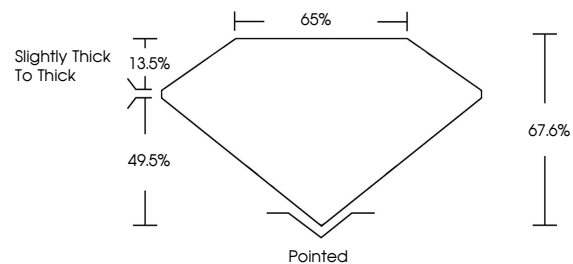
Carat Weight **1.73 CARAT**  
Color Grade **G**  
Clarity Grade **VS 2**  
Cut Grade **VERY GOOD**

**ADDITIONAL GRADING INFORMATION**

Polish **EXCELLENT**  
Symmetry **EXCELLENT**  
Fluorescence **NONE**  
Inscription(s) **IGI LG634435385**

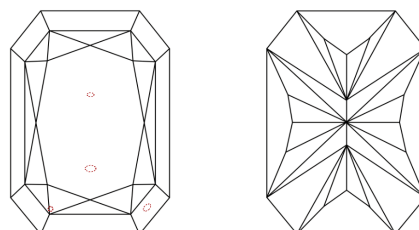
Comments: This Laboratory Grown Diamond was created by Chemical Vapor Deposition (CVD) growth process and may include post-growth treatment. Type IIa

**PROPORTIONS**



Sample Image Used

**CLARITY CHARACTERISTICS**



**KEY TO SYMBOLS**

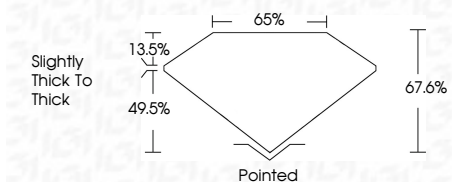
Red symbols indicate internal characteristics.  
Green symbols indicate external characteristics.

**COLOR**

D E F G H I J Faint Very Light Light

**CLARITY**

|                     |                             |                        |                   |                  |
|---------------------|-----------------------------|------------------------|-------------------|------------------|
| IF                  | VS <sup>1-2</sup>           | VS <sup>1-2</sup>      | SI <sup>1-2</sup> | I <sup>1-3</sup> |
| Internally Flawless | Very Very Slightly Included | Very Slightly Included | Slightly Included | Included         |



**ADDITIONAL GRADING INFORMATION**

Polish **EXCELLENT**  
Symmetry **EXCELLENT**  
Fluorescence **NONE**  
Inscription(s) **IGI LG634435385**  
Comments: This Laboratory Grown Diamond was created by Chemical Vapor Deposition (CVD) growth process and may include post-growth treatment. Type IIa



**IGI**



May 16, 2024  
IGI Report No. LG634435385  
CUT CORNERED RECT. MODIFIED BRILLIANT  
8.38 X 5.78 X 3.91 MM  
Carat Weight 1.73 CARAT  
Color Grade G  
Clarity Grade VS 2  
Cut Grade VERY GOOD  
Depth 67.6%  
Table 65%  
Girdle Slightly Thick to Thick  
Culet Pointed  
Polish EXCELLENT  
Symmetry EXCELLENT  
Fluorescence NONE  
Inscriptions(s) IGI LG634435385  
Comments: This Laboratory Grown Diamond was created by Chemical Vapor Deposition (CVD) growth process and may include post-growth treatment. Type IIa