

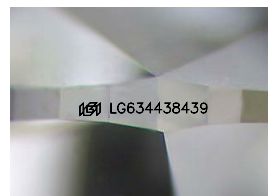
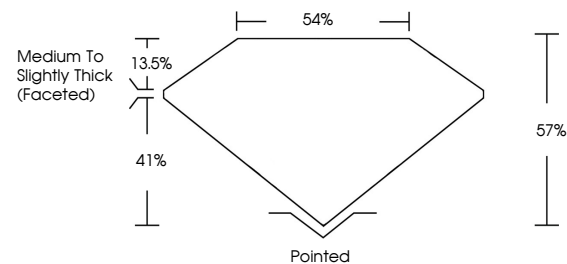


ELECTRONIC COPY

LABORATORY GROWN DIAMOND REPORT

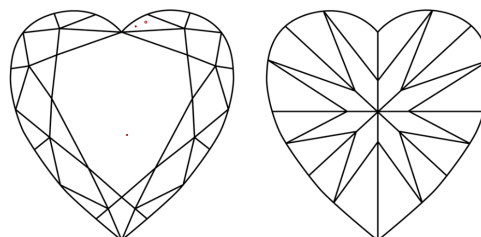
LG634438439
Report verification at lgi.org

PROPORTIONS



Sample Image Used

CLARITY CHARACTERISTICS



KEY TO SYMBOLS

Red symbols indicate internal characteristics.
Green symbols indicate external characteristics.

COLOR

D E F G H I J Faint Very Light Light

CLARITY

IF	VVS ^{1,2}	VS ^{1,2}	SI ^{1,2}	I ^{1,3}
Internally Flawless	Very Very Slightly Included	Very Slightly Included	Slightly Included	Included



© IGI 2020, International Gemological Institute

FD - 10 20

www.igi.org

DIAMOND REPORT



May 20, 2024

IGI Report Number **LG634438439**

Description	LABORATORY GROWN DIAMOND
-------------	--------------------------

Shape and Cutting Style **HEART BRILLIANT**

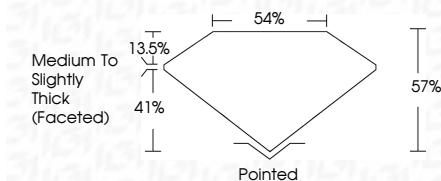
Measurements **6.59 X 7.12 X 4.06 MM**

GRADING RESULTS

Carat Weight 1.07 CARAT

Color Grade	D
-------------	---

Clarity Grade VS 1



ADDITIONAL GRADING INFORMATION

Polish **EXCELLENT**Symmetry **EXCELLENT**Fluorescence **NONE**Inscription(s) LG634438439

Comments: This Laboratory Grown Diamond was created by Chemical Vapor Deposition (CVD) growth process and may include post-growth treatment.
Type IIa



May 20, 2024
GI Report No LG634438439
HEART BRILLIANT

1.07 CARAT	VS 1	57%	56%	Medium To Slightly Thick (raised)	Pointed	EXCELLENT	EXCELLENT	NONE	4mm L GSA 4.06 100
1.07 CARAT	VS 1	57%	56%	Medium To Slightly Thick (raised)	Pointed	EXCELLENT	EXCELLENT	NONE	4mm L GSA 4.06 100

Comments:
This Laboratory Grown Diamond was created by Chemical Vapor Deposition (CVD) growth process and may include post-growth treatment.