



**INTERNATIONAL  
GEMOLOGICAL  
INSTITUTE**

**ELECTRONIC COPY**

**LG634439149**



May 14, 2024

IGI Report Number **LG634439149**

**PRINCESS CUT**

**LABORATORY GROWN DIAMOND**

**4.44 X 4.26 X 3.22 MM**

Carat Weight **0.54 CARAT**

Color Grade **F**

Clarity Grade **VVS 1**

Polish **VERY GOOD**

Symmetry **VERY GOOD**

Fluorescence **NONE**

Inscription(s) **IGI LG634439149**

Comments: This Laboratory Grown Diamond was created by Chemical Vapor Deposition (CVD) growth process and may include post-growth treatment. Type IIa

**LABORATORY GROWN DIAMOND REPORT**

May 14, 2024

IGI Report Number **LG634439149**

Description **LABORATORY GROWN DIAMOND**

Shape and Cutting Style **PRINCESS CUT**

Measurements **4.44 X 4.26 X 3.22 MM**

**GRADING RESULTS**

Carat Weight **0.54 CARAT**

Color Grade **F**

Clarity Grade **VVS 1**

**ADDITIONAL GRADING INFORMATION**

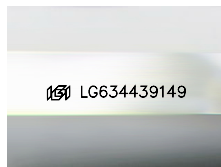
Polish **VERY GOOD**

Symmetry **VERY GOOD**

Fluorescence **NONE**

Inscription(s) **IGI LG634439149**

Comments: This Laboratory Grown Diamond was created by Chemical Vapor Deposition (CVD) growth process and may include post-growth treatment.  
Type IIa



Sample Image Used



May 14, 2024

IGI Report Number **LG634439149**

**PRINCESS CUT**

**LABORATORY GROWN DIAMOND**

**4.44 X 4.26 X 3.22 MM**

Carat Weight **0.54 CARAT**

Color Grade **F**

Clarity Grade **VVS 1**

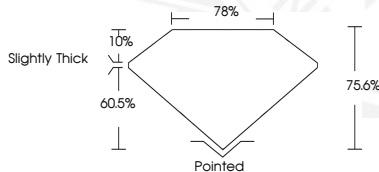
Polish **VERY GOOD**

Symmetry **VERY GOOD**

Fluorescence **NONE**

Inscription(s) **IGI LG634439149**

Comments: This Laboratory Grown Diamond was created by Chemical Vapor Deposition (CVD) growth process and may include post-growth treatment. Type IIa



THIS DOCUMENT WAS PRODUCED WITH THE FOLLOWING SECURITY MEASURES: SPECIAL DOCUMENT PAPER, INK SCREENS, WATERMARK, BACKGROUND DESIGN, HOLOGRAM AND OTHER SECURITY FEATURES NOT LISTED AND DO EXCEED DOCUMENT SECURITY INDUSTRY GUIDELINES.

For terms & conditions and to verify this report, please visit [www.igi.org](http://www.igi.org)