



ELECTRONIC COPY

LG634440722
Report verification at igi.org



May 23, 2024

IGI Report Number **LG634440722**

Description **LABORATORY GROWN DIAMOND**

Shape and Cutting Style **ROUND BRILLIANT**

Measurements **7.86 - 7.93 X 4.95 MM**

GRADING RESULTS

Carat Weight **1.92 CARAT**

Color Grade **FANCY INTENSE PINK**

Clarity Grade **VVS 1**

Cut Grade **EXCELLENT**

May 23, 2024

IGI Report Number **LG634440722**

Description **LABORATORY GROWN DIAMOND**

Shape and Cutting Style **ROUND BRILLIANT**

Measurements **7.86 - 7.93 X 4.95 MM**

GRADING RESULTS

Carat Weight **1.92 CARAT**

Color Grade **FANCY INTENSE PINK**

Clarity Grade **VVS 1**

Cut Grade **EXCELLENT**

ADDITIONAL GRADING INFORMATION

Polish **EXCELLENT**

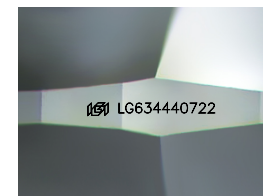
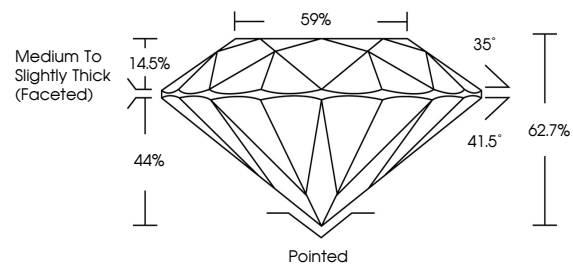
Symmetry **EXCELLENT**

Fluorescence **SLIGHT**

Inscription(s) **IGI LG634440722**

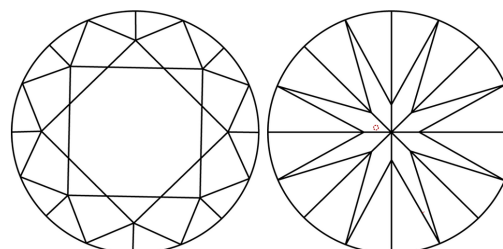
Comments: This Laboratory Grown Diamond was created by High Pressure High Temperature (HPHT) growth process.
Indications of post-growth treatment.

PROPORTIONS



Sample Image Used

CLARITY CHARACTERISTICS



KEY TO SYMBOLS

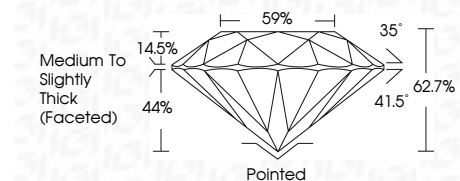
Red symbols indicate internal characteristics.
Green symbols indicate external characteristics.

COLOR

D E F G H I J Faint Very Light Light

CLARITY

IF	VS ¹⁻²	VS ¹⁻²	SI ¹⁻²	I ¹⁻³
Internally Flawless	Very Very Slightly Included	Very Slightly Included	Slightly Included	Included



ADDITIONAL GRADING INFORMATION

Polish **EXCELLENT**

Symmetry **EXCELLENT**

Fluorescence **SLIGHT**

Inscription(s) **IGI LG634440722**

Comments: This Laboratory Grown Diamond was created by High Pressure High Temperature (HPHT) growth process.
Indications of post-growth treatment.



IGI

May 23, 2024
IGI Report No LG634440722
ROUND BRILLIANT

7.86 - 7.93 X 4.95 MM
1.92 CARAT
FANCY INTENSE PINK
VVS 1
EXCELLENT
62.7%
59%
Medium To Slightly Thick (Faceted)

Pointed
EXCELLENT
EXCELLENT
SLIGHT
IGI LG634440722

Cutler
Polish
Symmetry
Fluorescence
Inscriptions(s)

Comments: This Laboratory Grown Diamond was created by High Pressure High Temperature (HPHT) growth process.
Indications of post-growth treatment.

