



ELECTRONIC COPY

LG634442610
Report verification at igi.org



May 17, 2024

IGI Report Number **LG634442610**

Description **LABORATORY GROWN DIAMOND**

Shape and Cutting Style **ROUND BRILLIANT**

Measurements **8.85 - 8.89 X 5.51 MM**

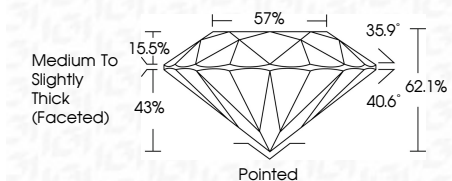
GRADING RESULTS

Carat Weight **2.68 CARATS**

Color Grade **E**

Clarity Grade **VS 1**

Cut Grade **IDEAL**



ADDITIONAL GRADING INFORMATION

Polish **EXCELLENT**

Symmetry **EXCELLENT**

Fluorescence **NONE**

Inscription(s) **IGI LG634442610**

Comments: As Grown - No indication of post-growth treatment.

This Laboratory Grown Diamond was created by High Pressure High Temperature (HPHT) growth process.

Type II



IGI

May 17, 2024	IGI Report No LG634442610	2.68 CARATS	E	VS 1	IDEAL	57%	Medium To Slightly Thick (Faceted)	Pointed	EXCELLENT	EXCELLENT	NONE	IGI LG634442610
ROUND BRILLIANT	8.85 - 8.89 X 5.51 MM	Carat Weight	Color Grade	Clarity Grade	Cut Grade	Table	Girdle	Culet	Polish	Symmetry	Fluorescence	Inscription(s)

Comments: As Grown - No indication of post-growth treatment. This Laboratory Grown Diamond was created by High Pressure High Temperature (HPHT) growth process. Type II

May 17, 2024

IGI Report No LG634442610

ROUND BRILLIANT

8.85 - 8.89 X 5.51 MM

Carat Weight

Color Grade

Clarity Grade

Cut Grade

Table

Girdle

Culet

Polish

Symmetry

Fluorescence

Inscription(s)

COLOR

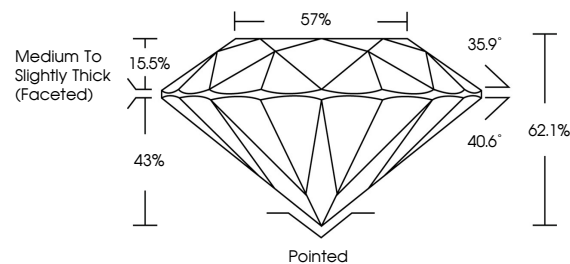
D E F G H I J Faint Very Light Light

CLARITY

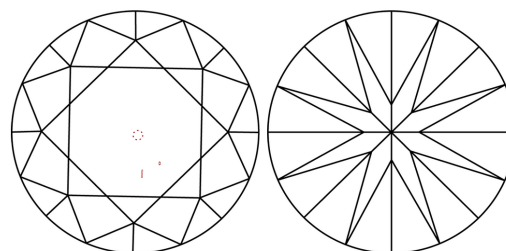
IF VS 1-2 VS 1-2 SI 1-2 I 1-3

Internally Flawless Very Very Slightly Included Very Slightly Included Slightly Included Included

PROPORTIONS

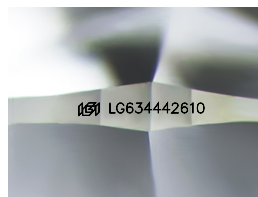


CLARITY CHARACTERISTICS



KEY TO SYMBOLS

Red symbols indicate internal characteristics.
Green symbols indicate external characteristics.



Sample Image Used

