

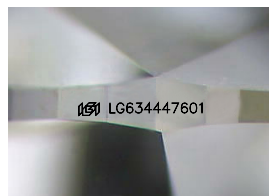
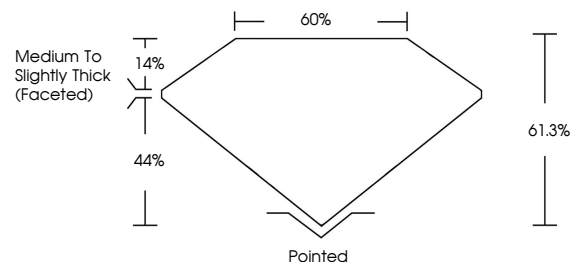


**ELECTRONIC COPY**

## LABORATORY GROWN DIAMOND REPORT

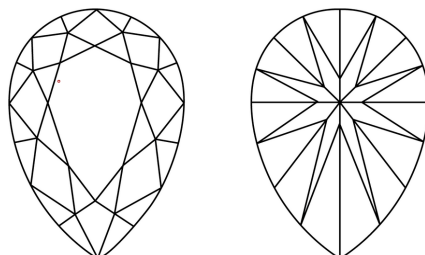
LG634447601  
Report verification at [igi.org](https://www.igi.org)

## PROPORTIONS



Sample Image Used

## CLARITY CHARACTERISTICS



## KEY TO SYMBOLS

Red symbols indicate internal characteristics.  
Green symbols indicate external characteristics.

## COLOR

D E F G H I J Faint Very Light Light

## CLARITY

IF	VVS <sup>1-2</sup>	VS <sup>1-2</sup>	SI <sup>1-2</sup>	I <sup>1-3</sup>
Internally Flawless	Very Very Slightly Included	Very Slightly Included	Slightly Included	Included



© IGI 2020, International Gemological Institute

FD - 10 20

**www.igi.org**

## DIAMOND REPORT



May 17, 2024

IGI Report Number **LG634447601**Description **LABORATORY GROWN DIAMOND**Shape and Cutting Style **PEAR BRILLIANT**

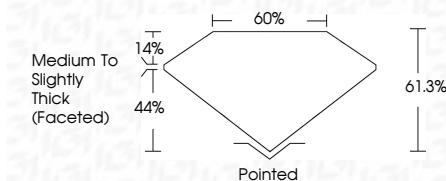
Measurements 11.74 X 7.21 X 4.42 MM

## GRADING RESULTS

Carat Weight **2.11 CARATS**

Color Grade

Clarity Grade VS 1



### ADDITIONAL GRADING INFORMATION

Polish **EXCELLENT**Symmetry **EXCELLENT**Fluorescence **NONE**Inscription(s)  LG634447601

Comments: This Laboratory Grown Diamond was created by Chemical Vapor Deposition (CVD) growth process and may include post-growth treatment.  
Type IIa



May 17, 2024	2.11 CARATS		VSI	Medium to Slightly Thick Faceted	Pointed	NONE	#691 LGS3446761
SIAR BRILLANT	11.74 X 7.21 X 4.42 MM	61.5%	EXCELLENT				
	Color Grade	40%	EXCELLENT				
	Clarity Grade						
	Carat Weight						
Comments: The Laboratory Crown Diamond was grown using the High Pressure High Temperature (HPHT) growth process and may include post-growth treatment.							
Type IIA							