



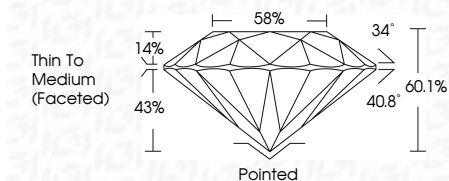
ELECTRONIC COPY

LG634470844 Report verification at igi.org



May 9, 2024 IGI Report Number LG634470844 Description LABORATORY GROWN DIAMOND Shape and Cutting Style ROUND BRILLIANT Measurements 8.40 - 8.52 X 5.07 MM

GRADING RESULTS Carat Weight 2.18 CARATS Color Grade E Clarity Grade VVS 2 Cut Grade IDEAL



ADDITIONAL GRADING INFORMATION Polish EXCELLENT Symmetry EXCELLENT Fluorescence NONE Inscription(s) IGI LG634470844 Comments: HEARTS & ARROWS This Laboratory Grown Diamond was created by Chemical Vapor Deposition (CVD) growth process and may include post-growth treatment. Type IIa



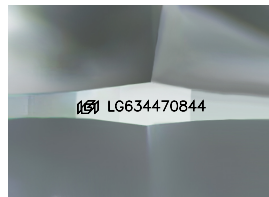
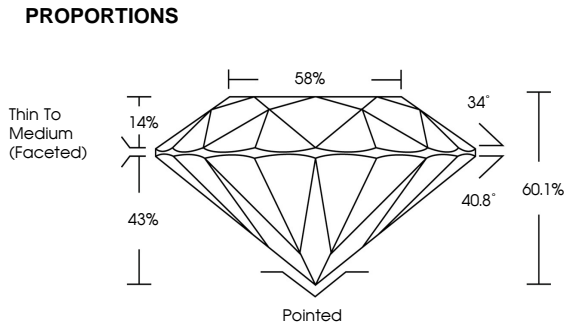
May 9, 2024 IGI Report No LG634470844 ROUND BRILLIANT 8.40 - 8.52 X 5.07 MM 2.18 CARATS E VVS 2 IDEAL 60.1% 58% Thin To Medium (Faceted) Pointed EXCELLENT EXCELLENT NONE IGI LG634470844

Comments: HEARTS & ARROWS This Laboratory Grown Diamond was created by Chemical Vapor Deposition (CVD) growth process and may include post-growth treatment. Type IIa

May 9, 2024 IGI Report Number LG634470844 Description LABORATORY GROWN DIAMOND Shape and Cutting Style ROUND BRILLIANT Measurements 8.40 - 8.52 X 5.07 MM GRADING RESULTS Carat Weight 2.18 CARATS Color Grade E Clarity Grade VVS 2 Cut Grade IDEAL

ADDITIONAL GRADING INFORMATION Polish EXCELLENT Symmetry EXCELLENT Fluorescence NONE Inscription(s) IGI LG634470844

Comments: HEARTS & ARROWS This Laboratory Grown Diamond was created by Chemical Vapor Deposition (CVD) growth process and may include post-growth treatment. Type IIa



Sample Image Used

COLOR table with columns D, E, F, G, H, I, J, Faint, Very Light, Light

CLARITY table with columns IF, VVS 1-2, VS 1-2, SI 1-2, I 1-3, Internally Flawless, Very Very Slightly Included, Very Slightly Included, Slightly Included, Included

