



ELECTRONIC COPY

LABORATORY GROWN DIAMOND REPORT

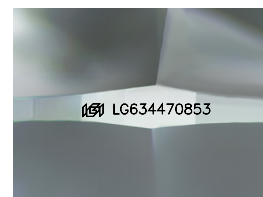
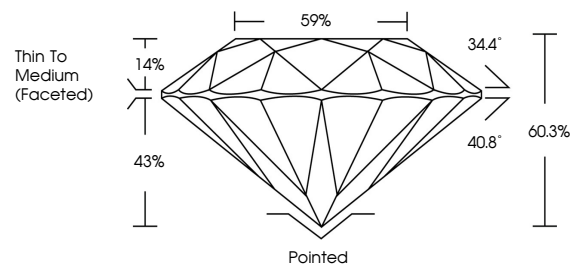
May 9, 2024
IGI Report Number LG634470853
Description LABORATORY GROWN DIAMOND
Shape and Cutting Style ROUND BRILLIANT
Measurements 7.94 - 7.97 X 4.80 MM
GRADING RESULTS
Carat Weight 1.85 CARAT
Color Grade D
Clarity Grade VVS 2
Cut Grade IDEAL

ADDITIONAL GRADING INFORMATION

Polish EXCELLENT
Symmetry EXCELLENT
Fluorescence NONE
Inscription(s) IGI LG634470853

Comments: HEARTS & ARROWS
This Laboratory Grown Diamond was created by Chemical Vapor Deposition (CVD) growth process and may include post-growth treatment. Type IIa

PROPORTIONS



Sample Image Used

COLOR

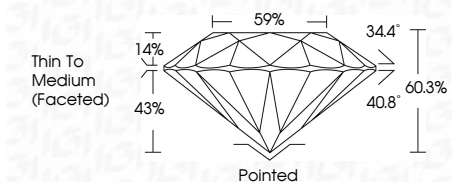
Color scale from D to Light, with 'Faint' and 'Very Light' also indicated.

CLARITY

Clarity scale from IF to I 1-3, with 'Very Very Slightly Included' and 'Very Slightly Included' also indicated.



May 9, 2024
IGI Report Number LG634470853
Description LABORATORY GROWN DIAMOND
Shape and Cutting Style ROUND BRILLIANT
Measurements 7.94 - 7.97 X 4.80 MM
GRADING RESULTS
Carat Weight 1.85 CARAT
Color Grade D
Clarity Grade VVS 2
Cut Grade IDEAL



ADDITIONAL GRADING INFORMATION

Polish EXCELLENT
Symmetry EXCELLENT
Fluorescence NONE
Inscription(s) IGI LG634470853
Comments: HEARTS & ARROWS
This Laboratory Grown Diamond was created by Chemical Vapor Deposition (CVD) growth process and may include post-growth treatment. Type IIa



May 9, 2024
IGI Report No LG634470853
ROUND BRILLIANT
7.94 - 7.97 X 4.80 MM
1.85 CARAT
D
VVS 2
IDEAL
60.3%
59%
Thin To Medium (Faceted)
Pointed
EXCELLENT
EXCELLENT
NONE
IGI LG634470853
Comments: HEARTS & ARROWS
This Laboratory Grown Diamond was created by Chemical Vapor Deposition (CVD) growth process and may include post-growth treatment. Type IIa