



ELECTRONIC COPY

LG634473648
Report verification at igi.org



May 9, 2024

IGI Report Number **LG634473648**

Description **LABORATORY GROWN DIAMOND**

Shape and Cutting Style **ROUND BRILLIANT**

Measurements **6.70 - 6.76 X 4.07 MM**

GRADING RESULTS

Carat Weight **1.14 CARAT**

Color Grade **D**

Clarity Grade **VVS 2**

Cut Grade **IDEAL**

May 9, 2024

IGI Report Number **LG634473648**

Description **LABORATORY GROWN DIAMOND**

Shape and Cutting Style **ROUND BRILLIANT**

Measurements **6.70 - 6.76 X 4.07 MM**

GRADING RESULTS

Carat Weight **1.14 CARAT**

Color Grade **D**

Clarity Grade **VVS 2**

Cut Grade **IDEAL**

ADDITIONAL GRADING INFORMATION

Polish **EXCELLENT**

Symmetry **EXCELLENT**

Fluorescence **NONE**

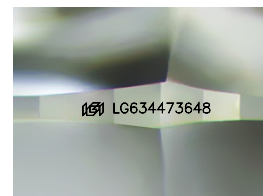
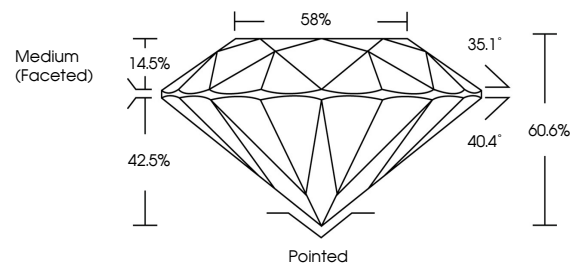
Inscription(s) **IGI LG634473648**

Comments: As Grown - No indication of post-growth treatment.

This Laboratory Grown Diamond was created by High Pressure High Temperature (HPHT) growth process.

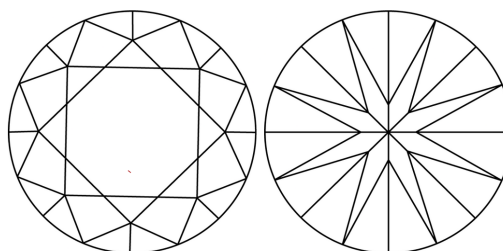
Type II

PROPORTIONS



Sample Image Used

CLARITY CHARACTERISTICS



KEY TO SYMBOLS

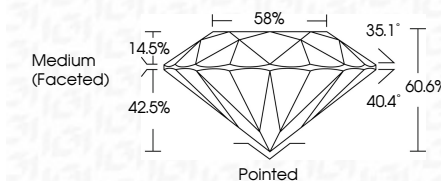
Red symbols indicate internal characteristics.
Green symbols indicate external characteristics.

COLOR

D E F G H I J Faint Very Light Light

CLARITY

| | | | | |
|---------------------|-----------------------------|------------------------|-------------------|------------------|
| IF | VS ¹⁻² | VS ¹⁻² | SI ¹⁻² | I ¹⁻³ |
| Internally Flawless | Very Very Slightly Included | Very Slightly Included | Slightly Included | Included |



ADDITIONAL GRADING INFORMATION

Polish **EXCELLENT**

Symmetry **EXCELLENT**

Fluorescence **NONE**

Inscription(s) **IGI LG634473648**

Comments: As Grown - No indication of post-growth treatment.

This Laboratory Grown Diamond was created by High Pressure High Temperature (HPHT) growth process.

Type II



IGI

| | | | | |
|---|---------------------------|---------------|------------------|-----------------|
| May 9, 2024 | IGI Report No LG634473648 | 1.14 CARAT | D | Pointed |
| ROUND BRILLIANT | 6.70 - 6.76 X 4.07 MM | VVS 2 | IDEAL | EXCELLENT |
| Carat Weight | Color Grade | Clarity Grade | Depth | Symmetry |
| | | | 60.6% | EXCELLENT |
| | | | 58% | NONE |
| | | | Medium (Faceted) | IGI LG634473648 |
| Cutler | Polish | Symmetry | Fluorescence | Inscription(s) |
| | | | | |
| Comments: As Grown - No indication of post-growth treatment. This Laboratory Grown Diamond was created by High Pressure High Temperature (HPHT) growth process. Type II | | | | |