



ELECTRONIC COPY

LG634473879
Report verification at igi.org



May 9, 2024

IGI Report Number LG634473879

Description LABORATORY GROWN DIAMOND

Shape and Cutting Style ROUND BRILLIANT

Measurements 6.70 - 6.73 X 4.07 MM

GRADING RESULTS

Carat Weight 1.13 CARAT

Color Grade D

Clarity Grade SI 1

Cut Grade EXCELLENT

LABORATORY GROWN DIAMOND REPORT

May 9, 2024

IGI Report Number LG634473879

Description LABORATORY GROWN DIAMOND

Shape and Cutting Style ROUND BRILLIANT

Measurements 6.70 - 6.73 X 4.07 MM

GRADING RESULTS

Carat Weight 1.13 CARAT

Color Grade D

Clarity Grade SI 1

Cut Grade EXCELLENT

ADDITIONAL GRADING INFORMATION

Polish EXCELLENT

Symmetry EXCELLENT

Fluorescence NONE

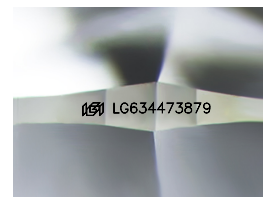
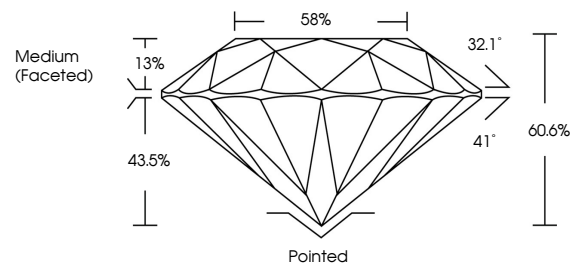
Inscription(s) IGI LG634473879

Comments: As Grown - No indication of post-growth treatment.

This Laboratory Grown Diamond was created by High Pressure High Temperature (HPHT) growth process.

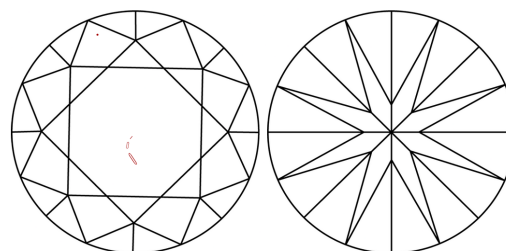
Type II

PROPORTIONS



Sample Image Used

CLARITY CHARACTERISTICS



KEY TO SYMBOLS

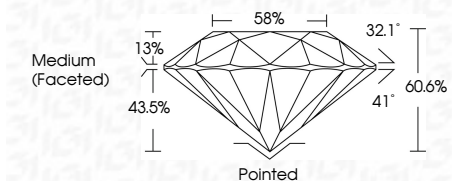
Red symbols indicate internal characteristics. Green symbols indicate external characteristics.

COLOR

D E F G H I J Faint Very Light Light

CLARITY

IF VS 1-2 VS 1-2 SI 1-2 I 1-3 Internally Flawless Very Very Slightly Included Very Slightly Included Slightly Included Included



ADDITIONAL GRADING INFORMATION

Polish EXCELLENT

Symmetry EXCELLENT

Fluorescence NONE

Inscription(s) IGI LG634473879

Comments: As Grown - No indication of post-growth treatment.

This Laboratory Grown Diamond was created by High Pressure High Temperature (HPHT) growth process.

Type II



IGI



Table with diamond specifications: May 9, 2024, IGI Report No LG634473879, ROUND BRILLIANT, 6.70 - 6.73 X 4.07 MM, 1.13 CARAT, D, EXCELLENT, SI 1, 60.6%, 88%, Medium (Faceted), Pointed, EXCELLENT, EXCELLENT, NONE, IGI LG634473879. Comments: As Grown - No indication of post-growth treatment. This Laboratory Grown Diamond was created by High Pressure High Temperature (HPHT) growth process. Type II