



ELECTRONIC COPY

LG634475226
Report verification at igi.org



May 16, 2024

IGI Report Number **LG634475226**

Description **LABORATORY GROWN DIAMOND**

Shape and Cutting Style **ROUND BRILLIANT**

Measurements **7.45 - 7.48 X 4.50 MM**

GRADING RESULTS

Carat Weight **1.53 CARAT**

Color Grade **F**

Clarity Grade **INTERNALLY FLAWLESS**

Cut Grade **IDEAL**

May 16, 2024
IGI Report Number **LG634475226**
Description **LABORATORY GROWN DIAMOND**
Shape and Cutting Style **ROUND BRILLIANT**
Measurements **7.45 - 7.48 X 4.50 MM**

GRADING RESULTS

Carat Weight **1.53 CARAT**

Color Grade **F**

Clarity Grade **INTERNALLY FLAWLESS**

Cut Grade **IDEAL**

ADDITIONAL GRADING INFORMATION

Polish **EXCELLENT**

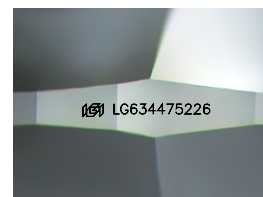
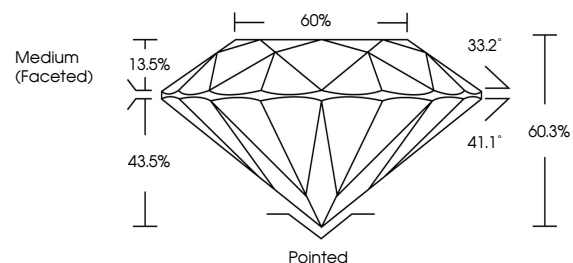
Symmetry **EXCELLENT**

Fluorescence **NONE**

Inscription(s) **IGI LG634475226**

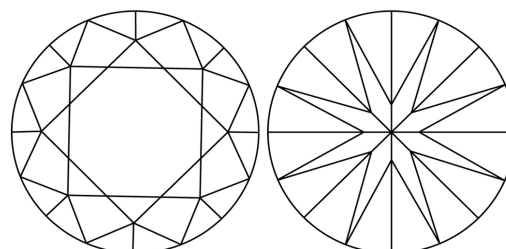
Comments: As Grown - No indication of post-growth treatment.
This Laboratory Grown Diamond was created by High Pressure High Temperature (HPHT) growth process.
Type II

PROPORTIONS



Sample Image Used

CLARITY CHARACTERISTICS



KEY TO SYMBOLS

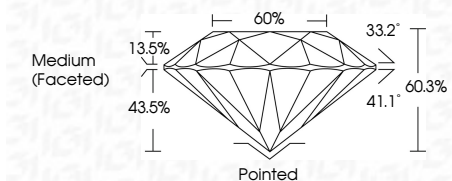
Red symbols indicate internal characteristics.
Green symbols indicate external characteristics.

COLOR

D E F G H I J Faint Very Light Light

CLARITY

IF VS¹⁻² VS¹⁻² SI¹⁻² I¹⁻³
Internally Flawless Very Very Slightly Included Very Slightly Included Slightly Included Included



ADDITIONAL GRADING INFORMATION

Polish **EXCELLENT**

Symmetry **EXCELLENT**

Fluorescence **NONE**

Inscription(s) **IGI LG634475226**

Comments: As Grown - No indication of post-growth treatment.
This Laboratory Grown Diamond was created by High Pressure High Temperature (HPHT) growth process.
Type II



IGI



Summary table of report details: May 16, 2024, IGI Report No LG634475226, ROUND BRILLIANT, 7.45 - 7.48 X 4.50 MM, 1.53 CARAT, F, IDEAL, 60.3%, 60%, Medium (Faceted), Pointed, EXCELLENT, EXCELLENT, NONE, IGI LG634475226. Comments: As Grown - No indication of post-growth treatment. This Laboratory Grown Diamond was created by High Pressure High Temperature (HPHT) growth process. Type II