



ELECTRONIC COPY

LG634479701
Report verification at igi.org



May 21, 2024

IGI Report Number **LG634479701**

Description **LABORATORY GROWN DIAMOND**

Shape and Cutting Style **ROUND BRILLIANT**

Measurements **7.97 - 8.02 X 4.70 MM**

GRADING RESULTS

Carat Weight **1.83 CARAT**

Color Grade **F**

Clarity Grade **VS 2**

Cut Grade **EXCELLENT**

LABORATORY GROWN DIAMOND REPORT

May 21, 2024

IGI Report Number **LG634479701**

Description **LABORATORY GROWN DIAMOND**

Shape and Cutting Style **ROUND BRILLIANT**

Measurements **7.97 - 8.02 X 4.70 MM**

GRADING RESULTS

Carat Weight **1.83 CARAT**

Color Grade **F**

Clarity Grade **VS 2**

Cut Grade **EXCELLENT**

ADDITIONAL GRADING INFORMATION

Polish **EXCELLENT**

Symmetry **EXCELLENT**

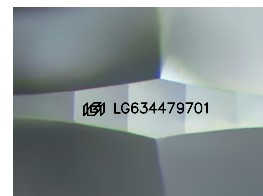
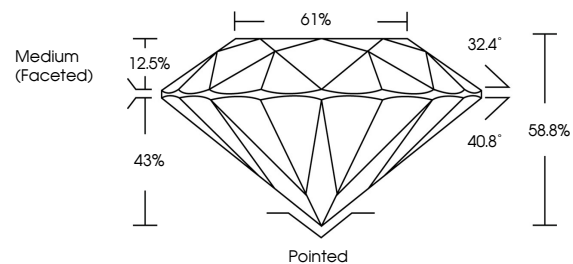
Fluorescence **NONE**

Inscription(s) **LG634479701**

Comments: Hearts & Arrows pattern viewable with H&A scope.

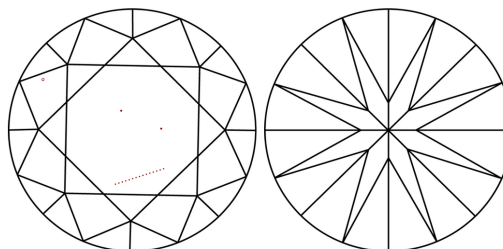
This Laboratory Grown Diamond was created by Chemical Vapor Deposition (CVD) growth process and may include post-growth treatment.
Type IIa

PROPORTIONS



Sample Image Used

CLARITY CHARACTERISTICS



KEY TO SYMBOLS

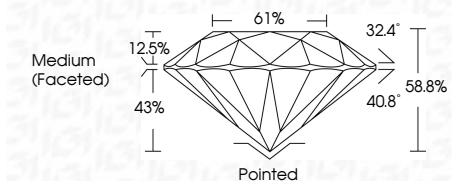
Red symbols indicate internal characteristics.
Green symbols indicate external characteristics.

COLOR

D E F G H I J Faint Very Light Light

CLARITY

IF	VS ¹⁻²	VS ¹⁻²	SI ¹⁻²	I ¹⁻³
Internally Flawless	Very Very Slightly Included	Very Slightly Included	Slightly Included	Included



ADDITIONAL GRADING INFORMATION

Polish **EXCELLENT**

Symmetry **EXCELLENT**

Fluorescence **NONE**

Inscription(s) **LG634479701**

Comments: Hearts & Arrows pattern viewable with H&A scope.
This Laboratory Grown Diamond was created by Chemical Vapor Deposition (CVD) growth process and may include post-growth treatment.
Type IIa



IGI



May 21, 2024	IGI Report No LG634479701	1.83 CARAT	F	VS 2	EXCELLENT	61%	61%	Medium (Faceted)	Pointed	EXCELLENT	EXCELLENT	NONE	LG634479701
ROUND BRILLIANT	7.97 - 8.02 X 4.70 MM	Carat Weight	Color Grade	Clarity Grade	Cut Grade	Table	Depth	Girdle	Culet	Polish	Symmetry	Fluorescence	Inscription(s)

Comments: Hearts & Arrows pattern viewable with H&A scope.
This Laboratory Grown Diamond was created by Chemical Vapor Deposition (CVD) growth process and may include post-growth treatment.
Type IIa