



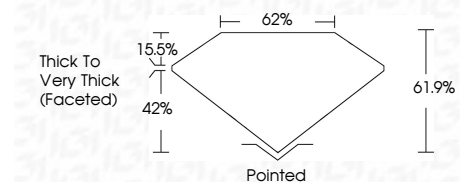
ELECTRONIC COPY

LG634480434
Report verification at igi.org



May 9, 2024
IGI Report Number **LG634480434**
Description **LABORATORY GROWN DIAMOND**
Shape and Cutting Style **SQUARE CUSHION BRILLIANT**
Measurements **9.88 X 9.66 X 5.98 MM**

GRADING RESULTS
Carat Weight **5.17 CARATS**
Color Grade **E**
Clarity Grade **VVS 2**



ADDITIONAL GRADING INFORMATION
Polish **EXCELLENT**
Symmetry **EXCELLENT**
Fluorescence **NONE**
Inscription(s) **IGI LG634480434**
Comments: This Laboratory Grown Diamond was created by Chemical Vapor Deposition (CVD) growth process and may include post-growth treatment. Type IIa



May 9, 2024
IGI Report No. **LG634480434**
SQUARE CUSHION BRILLIANT
9.88 X 9.66 X 5.98 MM
6.17 CARATS
E
VVS 2
61.9%
42%
Thick to Very Thick (Faceted)
Pointed
EXCELLENT
EXCELLENT
NONE
IGI LG634480434
Comments: This Laboratory Grown Diamond was created by Chemical Vapor Deposition (CVD) growth process and may include post-growth treatment. Type IIa

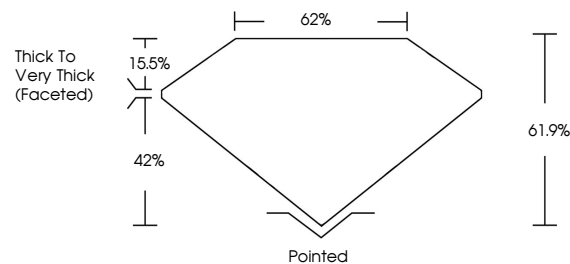
May 9, 2024
IGI Report Number **LG634480434**
Description **LABORATORY GROWN DIAMOND**
Shape and Cutting Style **SQUARE CUSHION BRILLIANT**
Measurements **9.88 X 9.66 X 5.98 MM**

GRADING RESULTS
Carat Weight **5.17 CARATS**
Color Grade **E**
Clarity Grade **VVS 2**

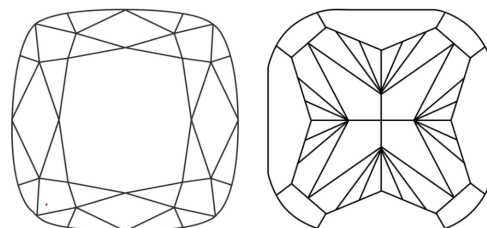
ADDITIONAL GRADING INFORMATION
Polish **EXCELLENT**
Symmetry **EXCELLENT**
Fluorescence **NONE**
Inscription(s) **IGI LG634480434**

Comments: This Laboratory Grown Diamond was created by Chemical Vapor Deposition (CVD) growth process and may include post-growth treatment. Type IIa

PROPORTIONS

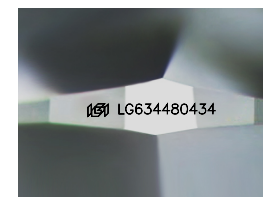


CLARITY CHARACTERISTICS



KEY TO SYMBOLS

Red symbols indicate internal characteristics.
Green symbols indicate external characteristics.



Sample Image Used

COLOR

D E F G H I J Faint Very Light Light

CLARITY

IF	VS ¹⁻²	VS ¹⁻²	SI ¹⁻²	I ¹⁻³
Internally Flawless	Very Very Slightly Included	Very Slightly Included	Slightly Included	Included

