



ELECTRONIC COPY

LABORATORY GROWN DIAMOND REPORT

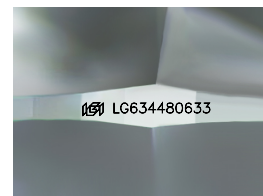
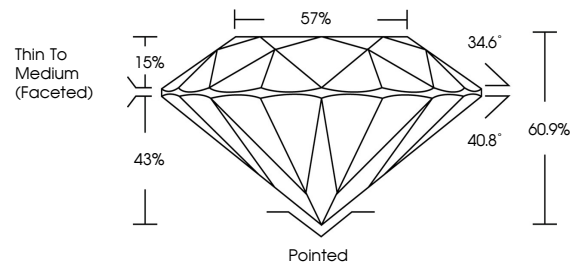
May 9, 2024
IGI Report Number LG634480633
Description LABORATORY GROWN DIAMOND
Shape and Cutting Style ROUND BRILLIANT
Measurements 8.32 - 8.37 X 5.07 MM
GRADING RESULTS
Carat Weight 2.13 CARATS
Color Grade D
Clarity Grade VVS 1
Cut Grade IDEAL

ADDITIONAL GRADING INFORMATION

Polish EXCELLENT
Symmetry EXCELLENT
Fluorescence NONE
Inscription(s) IGI LG634480633

Comments: HEARTS & ARROWS
This Laboratory Grown Diamond was created by Chemical Vapor Deposition (CVD) growth process and may include post-growth treatment. Type IIa

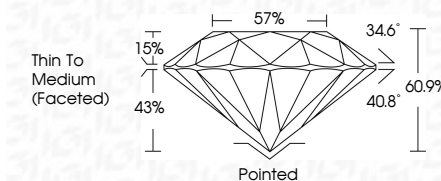
PROPORTIONS



Sample Image Used



May 9, 2024
IGI Report Number LG634480633
Description LABORATORY GROWN DIAMOND
Shape and Cutting Style ROUND BRILLIANT
Measurements 8.32 - 8.37 X 5.07 MM
GRADING RESULTS
Carat Weight 2.13 CARATS
Color Grade D
Clarity Grade VVS 1
Cut Grade IDEAL



ADDITIONAL GRADING INFORMATION

Polish EXCELLENT
Symmetry EXCELLENT
Fluorescence NONE
Inscription(s) IGI LG634480633
Comments: HEARTS & ARROWS
This Laboratory Grown Diamond was created by Chemical Vapor Deposition (CVD) growth process and may include post-growth treatment. Type IIa

COLOR

D E F G H I J Faint Very Light Light

CLARITY

IF VVS 1-2 VS 1-2 SI 1-2 I 1-3
Internally Flawless Very Very Slightly Included Very Slightly Included Slightly Included Included



IGI

May 9, 2024
IGI Report No LG634480633
ROUND BRILLIANT
8.32 - 8.37 X 5.07 MM
2.13 CARATS D
VVS 1 IDEAL
60.9% 57%
Thin To Medium (Faceted)
Pointed EXCELLENT EXCELLENT NONE
None IGI LG634480633
Comments: HEARTS & ARROWS
This Laboratory Grown Diamond was created by Chemical Vapor Deposition (CVD) growth process and may include post-growth treatment. Type IIa