



**ELECTRONIC COPY**

LG634481300  
Report verification at igi.org



June 24, 2024

IGI Report Number **LG634481300**

Description **LABORATORY GROWN DIAMOND**

Shape and Cutting Style **PRINCESS CUT**

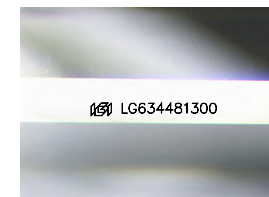
Measurements **6.37 X 6.25 X 4.59 MM**

**GRADING RESULTS**

Carat Weight **1.55 CARAT**

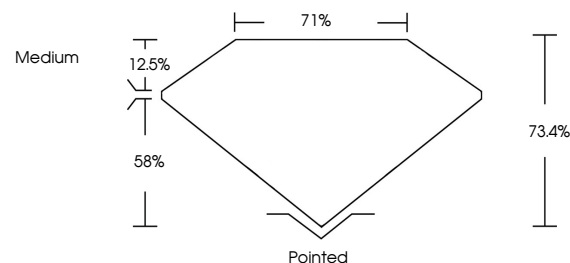
Color Grade **E**

Clarity Grade **VS 1**

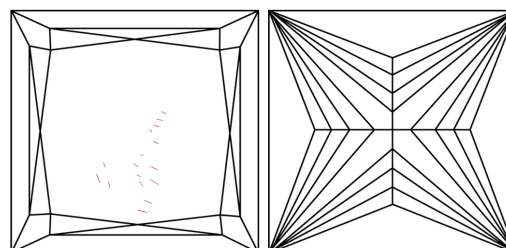


Sample Image Used

**PROPORTIONS**



**CLARITY CHARACTERISTICS**



**KEY TO SYMBOLS**

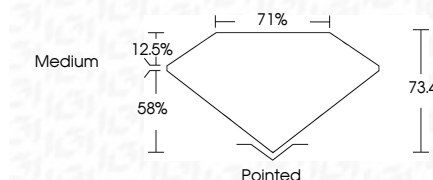
Red symbols indicate internal characteristics.  
Green symbols indicate external characteristics.

**COLOR**

D E F G H I J Faint Very Light Light

**CLARITY**

IF	VS <sup>1-2</sup>	VS <sup>1-2</sup>	SI <sup>1-2</sup>	I <sup>1-3</sup>
Internally Flawless	Very Very Slightly Included	Very Slightly Included	Slightly Included	Included



**ADDITIONAL GRADING INFORMATION**

Polish **EXCELLENT**

Symmetry **EXCELLENT**

Fluorescence **NONE**

Inscription(s) **IGI LG634481300**

Comments: As Grown - No indication of post-growth treatment.

This Laboratory Grown Diamond was created by High Pressure High Temperature (HPHT) growth process. Type II



**IGI**

June 24, 2024  
IGI Report No. LG634481300  
PRINCESS CUT  
6.37 X 6.25 X 4.59 MM  
Carat Weight 1.55 CARAT  
Color Grade E  
Clarity Grade VS 1  
Depth 58%  
Table 12.5%  
Girdle 71%  
Culet Medium  
Polish Pointed  
Symmetry EXCELLENT  
Fluorescence NONE  
Inscription(s) IGI LG634481300

Comments: As Grown - No indication of post-growth treatment. This Laboratory Grown Diamond was created by High Pressure High Temperature (HPHT) growth process. Type II