



ELECTRONIC COPY

LG634481309 Report verification at igi.org



June 24, 2024
IGI Report Number: LG634481309
Description: LABORATORY GROWN DIAMOND
Shape and Cutting Style: SQUARE CUSHION MODIFIED BRILLIANT
Measurements: 6.89 X 6.85 X 4.54 MM
GRADING RESULTS
Carat Weight: 1.67 CARAT
Color Grade: D
Clarity Grade: INTERNALLY FLAWLESS

LABORATORY GROWN DIAMOND REPORT

June 24, 2024
IGI Report Number: LG634481309
Description: LABORATORY GROWN DIAMOND
Shape and Cutting Style: SQUARE CUSHION MODIFIED BRILLIANT
Measurements: 6.89 X 6.85 X 4.54 MM

GRADING RESULTS

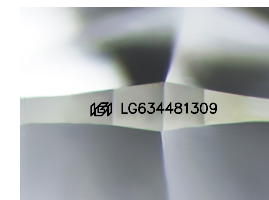
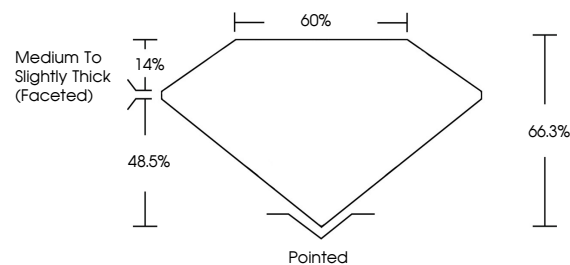
Carat Weight: 1.67 CARAT
Color Grade: D
Clarity Grade: INTERNALLY FLAWLESS

ADDITIONAL GRADING INFORMATION

Polish: EXCELLENT
Symmetry: EXCELLENT
Fluorescence: NONE
Inscription(s): IGI LG634481309

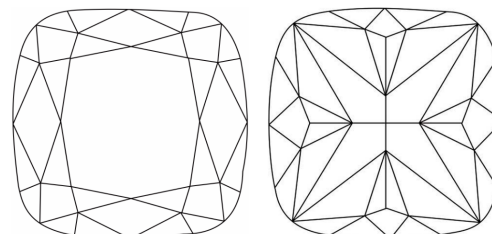
Comments: As Grown - No indication of post-growth treatment. This Laboratory Grown Diamond was created by High Pressure High Temperature (HPHT) growth process. Type II

PROPORTIONS



Sample Image Used

CLARITY CHARACTERISTICS



KEY TO SYMBOLS

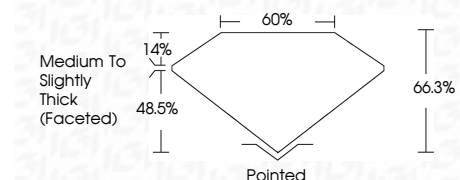
Red symbols indicate internal characteristics. Green symbols indicate external characteristics.

COLOR

D E F G H I J Faint Very Light Light

CLARITY

IF VS 1-2 VS 1-2 SI 1-2 I 1-3
Internally Flawless Very Very Slightly Included Very Slightly Included Slightly Included Included



ADDITIONAL GRADING INFORMATION

Polish: EXCELLENT
Symmetry: EXCELLENT
Fluorescence: NONE
Inscription(s): IGI LG634481309
Comments: As Grown - No indication of post-growth treatment. This Laboratory Grown Diamond was created by High Pressure High Temperature (HPHT) growth process. Type II



June 24, 2024
IGI Report No: LG634481309
SHAPE CUSHION MODIFIED BRILLIANT
6.89 X 6.85 X 4.54 MM
1.67 CARAT
D
LF
66.3%
48.5%
Medium to Slightly Thick (Faceted)
Pointed
EXCELLENT
EXCELLENT
NONE
IGI LG634481309
Comments: As Grown - No indication of post-growth treatment. This Laboratory Grown Diamond was created by High Pressure High Temperature (HPHT) growth process. Type II