



ELECTRONIC COPY

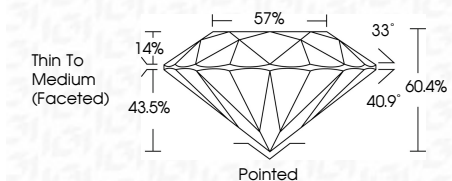
LG634481651
Report verification at igi.org



July 2, 2024
IGI Report Number LG634481651
Description LABORATORY GROWN DIAMOND
Shape and Cutting Style ROUND BRILLIANT
Measurements 8.60 - 8.65 X 5.20 MM

GRADING RESULTS

Carat Weight 2.34 CARATS
Color Grade G
Clarity Grade VS 1
Cut Grade IDEAL

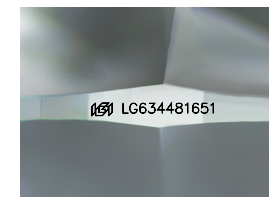


ADDITIONAL GRADING INFORMATION

Polish VERY GOOD
Symmetry EXCELLENT
Fluorescence NONE
Inscription(s) IGI LG634481651
Comments: This Laboratory Grown Diamond was created by Chemical Vapor Deposition (CVD) growth process. Type IIa

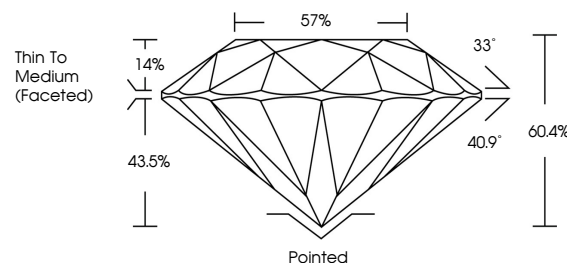


July 2, 2024
IGI Report No LG634481651
ROUND BRILLIANT
8.60 - 8.65 X 5.20 MM
2.34 CARATS G
Color Grade VS 1
Clarity Grade IDEAL
Depth 60.4%
Table 57%
Thin To Medium (Faceted) Pointed
Cutler VERY GOOD
Polish EXCELLENT
Symmetry NONE
Fluorescence NONE
Inscription(s) IGI LG634481651
Comments: This Laboratory Grown Diamond was created by Chemical Vapor Deposition (CVD) growth process. Type IIa

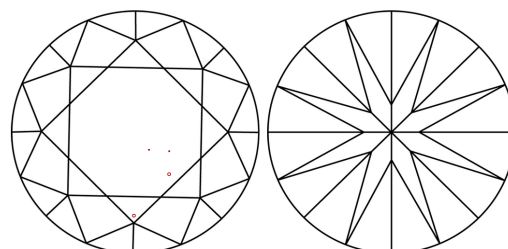


Sample Image Used

PROPORTIONS



CLARITY CHARACTERISTICS



KEY TO SYMBOLS

Red symbols indicate internal characteristics.
Green symbols indicate external characteristics.

COLOR

D E F G H I J Faint Very Light Light

CLARITY

IF VS 1-2 VS 1-2 SI 1-2 I 1-3
Internally Flawless Very Very Slightly Included Very Slightly Included Slightly Included Included

