



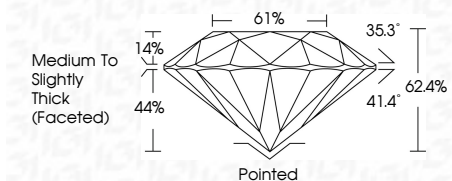
ELECTRONIC COPY

LG634482533 Report verification at igi.org



May 21, 2024 IGI Report Number LG634482533 Description LABORATORY GROWN DIAMOND Shape and Cutting Style ROUND BRILLIANT Measurements 7.97 - 8.01 X 4.99 MM

GRADING RESULTS Carat Weight 2.00 CARATS Color Grade E Clarity Grade VS 1 Cut Grade EXCELLENT



ADDITIONAL GRADING INFORMATION Polish EXCELLENT Symmetry EXCELLENT Fluorescence NONE Inscription(s) IGI LG634482533 Comments: This Laboratory Grown Diamond was created by Chemical Vapor Deposition (CVD) growth process. Type IIa



May 21, 2024 IGI Report No LG634482533 ROUND BRILLIANT 2.00 CARATS E VS 1 EXCELLENT 62.4% 61% Medium To Slightly Thick (Faceted) Pointed EXCELLENT EXCELLENT NONE IGI LG634482533 Comments: This Laboratory Grown Diamond was created by Chemical Vapor Deposition (CVD) growth process. Type IIa

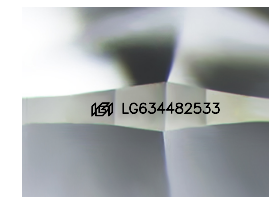
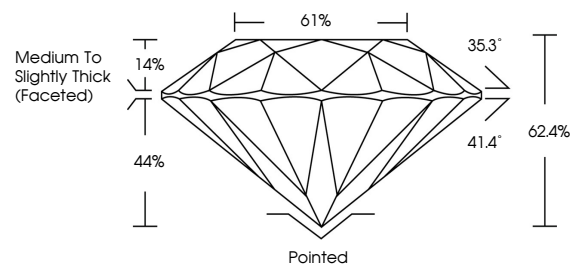
May 21, 2024 IGI Report Number LG634482533 Description LABORATORY GROWN DIAMOND Shape and Cutting Style ROUND BRILLIANT Measurements 7.97 - 8.01 X 4.99 MM

GRADING RESULTS Carat Weight 2.00 CARATS Color Grade E Clarity Grade VS 1 Cut Grade EXCELLENT

ADDITIONAL GRADING INFORMATION Polish EXCELLENT Symmetry EXCELLENT Fluorescence NONE Inscription(s) IGI LG634482533

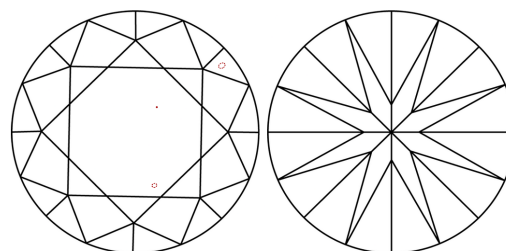
Comments: This Laboratory Grown Diamond was created by Chemical Vapor Deposition (CVD) growth process. Type IIa

PROPORTIONS



Sample Image Used

CLARITY CHARACTERISTICS



KEY TO SYMBOLS

Red symbols indicate internal characteristics. Green symbols indicate external characteristics.

COLOR

D E F G H I J Faint Very Light Light

CLARITY

IF VS 1-2 VS 1-2 SI 1-2 I 1-3 Internally Flawless Very Very Slightly Included Very Slightly Included Slightly Included Included

