



**INTERNATIONAL
GEMOLOGICAL
INSTITUTE**

LABORATORY GROWN DIAMOND REPORT

May 11, 2024
 IGI Report Number **LG634490681**
 Description **LABORATORY GROWN DIAMOND**
 Shape and Cutting Style **ROUND BRILLIANT**
 Measurements **3.65 - 3.67 X 2.25 MM**

GRADING RESULTS

Carat Weight **0.18 CARAT**
 Color Grade **D**
 Clarity Grade **SI 1**
 Cut Grade **EXCELLENT**

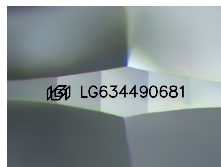
ADDITIONAL GRADING INFORMATION

Polish **EXCELLENT**
 Symmetry **VERY GOOD**
 Fluorescence **NONE**
 Inscription(s) **IGI LG634490681**

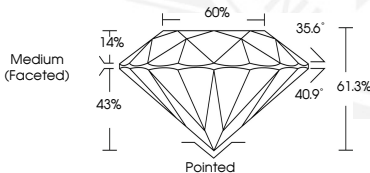
Comments: As Grown - No indication of post-growth treatment. This Laboratory Grown Diamond was created by High Pressure High Temperature (HPHT) growth process. Type II

ELECTRONIC COPY

LG634490681



Sample Image Used



May 11, 2024
 IGI Report Number **LG634490681**
 ROUND BRILLIANT
 LABORATORY GROWN DIAMOND
3.65 - 3.67 X 2.25 MM
 Carat Weight **0.18 CARAT**
 Color Grade **D**
 Clarity Grade **SI 1**
 Cut Grade **EXCELLENT**
 Polish **EXCELLENT**
 Symmetry **VERY GOOD**
 Fluorescence **NONE**
 Inscription(s) **IGI LG634490681**

Comments: As Grown - No indication of post-growth treatment. This Laboratory Grown Diamond was created by High Pressure High Temperature (HPHT) growth process. Type II



May 11, 2024
 IGI Report Number **LG634490681**
 ROUND BRILLIANT
 LABORATORY GROWN DIAMOND
3.65 - 3.67 X 2.25 MM
 Carat Weight **0.18 CARAT**
 Color Grade **D**
 Clarity Grade **SI 1**
 Cut Grade **EXCELLENT**
 Polish **EXCELLENT**
 Symmetry **VERY GOOD**
 Fluorescence **NONE**
 Inscription(s) **IGI LG634490681**

Comments: As Grown - No indication of post-growth treatment. This Laboratory Grown Diamond was created by High Pressure High Temperature (HPHT) growth process. Type II

THIS DOCUMENT WAS PRODUCED WITH THE FOLLOWING SECURITY MEASURES: SPECIAL DOCUMENT PAPER, INK SCREENS, WATERMARK, BACKGROUND DESIGN, HOLOGRAM AND OTHER SECURITY FEATURES NOT LISTED AND DO EXCEED DOCUMENT SECURITY INDUSTRY GUIDELINES.

For terms & conditions and to verify this report, please visit www.igi.org