



ELECTRONIC COPY

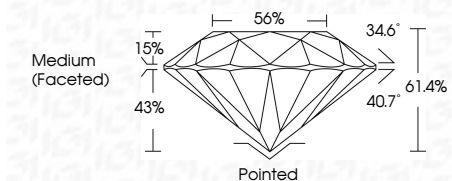
LG634497938
Report verification at igi.org



May 11, 2024
IGI Report Number LG634497938
Description LABORATORY GROWN DIAMOND
Shape and Cutting Style ROUND BRILLIANT
Measurements 9.36 - 9.40 X 5.75 MM

GRADING RESULTS

Carat Weight 3.10 CARATS
Color Grade G
Clarity Grade VVS 1
Cut Grade IDEAL



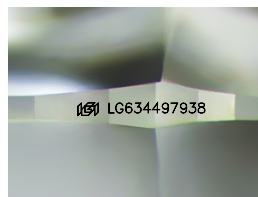
ADDITIONAL GRADING INFORMATION

Polish EXCELLENT
Symmetry EXCELLENT
Fluorescence NONE
Inscription(s) LG634497938
Comments: HEARTS & ARROWS
As Grown - No indication of post-growth treatment.
This Laboratory Grown Diamond was created by High Pressure High Temperature (HPHT) growth process.
Type II
Faint Blue



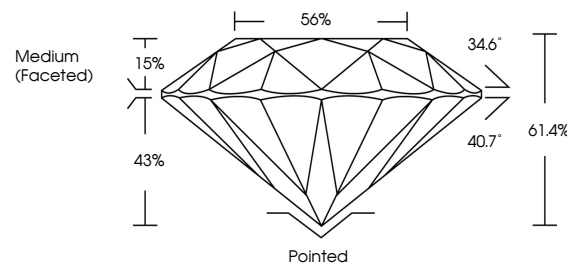
IGI

May 11, 2024
IGI Report No LG634497938
ROUND BRILLIANT
9.36 - 9.40 X 5.75 MM
3.10 CARATS
Color Grade G
Clarity Grade VVS 1
Cut Grade IDEAL
Depth 61.4%
Table 56%
Girdle Medium (Faceted)
Culet Pointed
Polish EXCELLENT
Symmetry EXCELLENT
Fluorescence NONE
Inscription(s) LG634497938
Comments: HEARTS & ARROWS
As Grown - No indication of post-growth treatment.
This Laboratory Grown Diamond was created by High Pressure High Temperature (HPHT) growth process.
Type II
Faint Blue

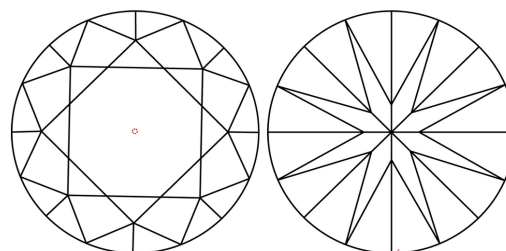


Sample Image Used

PROPORTIONS



CLARITY CHARACTERISTICS



KEY TO SYMBOLS

Red symbols indicate internal characteristics.
Green symbols indicate external characteristics.



COLOR

D E F G H I J Faint Very Light Light

CLARITY

IF VVS 1-2 VS 1-2 SI 1-2 I 1-3
Internally Flawless Very Very Slightly Included Very Slightly Included Slightly Included Included

