



ELECTRONIC COPY

LG634497941
Report verification at igi.org



May 11, 2024

IGI Report Number LG634497941

Description LABORATORY GROWN DIAMOND

Shape and Cutting Style ROUND BRILLIANT

Measurements 11.65 - 11.68 X 7.20 MM

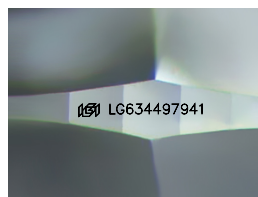
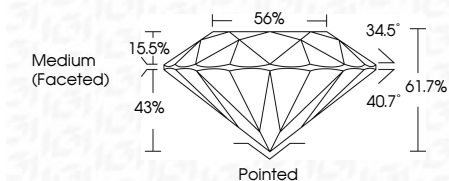
GRADING RESULTS

Carat Weight 6.02 CARATS

Color Grade E

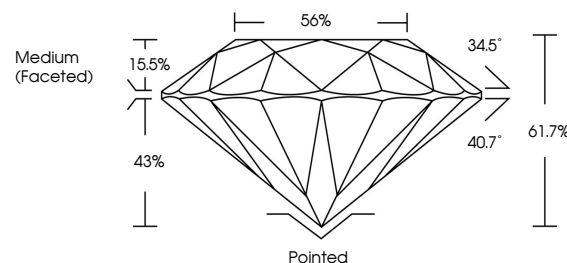
Clarity Grade INTERNALLY FLAWLESS

Cut Grade IDEAL

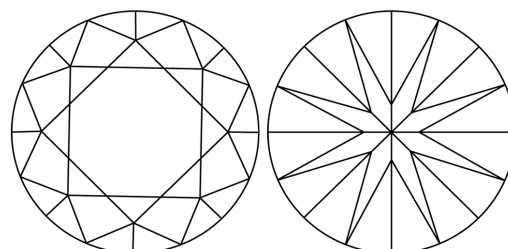


Sample Image Used

PROPORTIONS



CLARITY CHARACTERISTICS



KEY TO SYMBOLS

Red symbols indicate internal characteristics. Green symbols indicate external characteristics.

COLOR

D E F G H I J Faint Very Light Light

CLARITY

IF VS 1-2 VS 1-2 SI 1-2 I 1-3 Internally Flawless Very Very Slightly Included Very Slightly Included Slightly Included Included

ADDITIONAL GRADING INFORMATION

Polish EXCELLENT

Symmetry EXCELLENT

Fluorescence NONE

Inscription(s) LG634497941

Comments: As Grown - No indication of post-growth treatment.

This Laboratory Grown Diamond was created by High Pressure High Temperature (HPHT) growth process.

Type II



IGI

May 11, 2024
IGI Report No LG634497941
ROUND BRILLIANT

11.65 - 11.68 X 7.20 MM

6.02 CARATS

E

IF

IDEAL

61.7%

56%

Medium (Faceted)

Pointed

EXCELLENT

EXCELLENT

NONE

IGI LG634497941

Comments: As Grown - No indication of post-growth treatment.

This Laboratory Grown Diamond was created by High Pressure High Temperature (HPHT) growth process.

Type II