



ELECTRONIC COPY

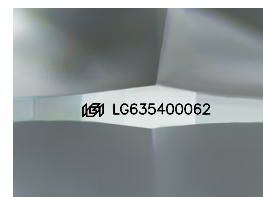
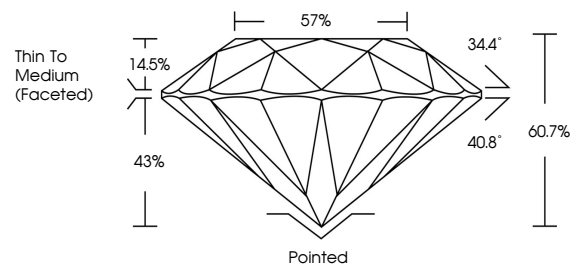
LG635400062 Report verification at igi.org



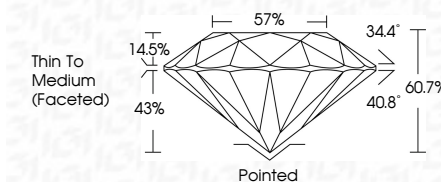
May 18, 2024 IGI Report Number LG635400062 Description LABORATORY GROWN DIAMOND Shape and Cutting Style ROUND BRILLIANT Measurements 6.88 - 6.91 X 4.18 MM GRADING RESULTS Carat Weight 1.21 CARAT Color Grade D Clarity Grade VVS 1 Cut Grade IDEAL

May 18, 2024 IGI Report Number LG635400062 Description LABORATORY GROWN DIAMOND Shape and Cutting Style ROUND BRILLIANT Measurements 6.88 - 6.91 X 4.18 MM GRADING RESULTS Carat Weight 1.21 CARAT Color Grade D Clarity Grade VVS 1 Cut Grade IDEAL

PROPORTIONS



Sample Image Used



ADDITIONAL GRADING INFORMATION

Polish EXCELLENT Symmetry EXCELLENT Fluorescence NONE Inscription(s) IGI LG635400062

ADDITIONAL GRADING INFORMATION

Polish EXCELLENT Symmetry EXCELLENT Fluorescence NONE Inscription(s) IGI LG635400062 Comments: HEARTS & ARROWS This Laboratory Grown Diamond was created by Chemical Vapor Deposition (CVD) growth process and may include post-growth treatment. Type IIa

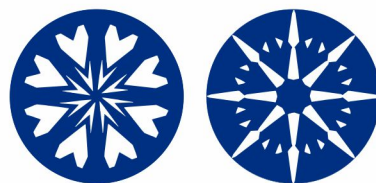
Comments: HEARTS & ARROWS This Laboratory Grown Diamond was created by Chemical Vapor Deposition (CVD) growth process and may include post-growth treatment. Type IIa

COLOR

D E F G H I J Faint Very Light Light

CLARITY

IF VVS 1-2 VS 1-2 SI 1-2 I 1-3 Internally Flawless Very Very Slightly Included Very Slightly Included Slightly Included Included



IGI

May 18, 2024 IGI Report No LG635400062 ROUND BRILLIANT 6.88 - 6.91 X 4.18 MM 1.21 CARAT D VVS 1 IDEAL 60.7% 57% Thin To Medium (Faceted) Pointed EXCELLENT EXCELLENT NONE NONE IGI LG635400062

Comments: HEARTS & ARROWS This Laboratory Grown Diamond was created by Chemical Vapor Deposition (CVD) growth process and may include post-growth treatment. Type IIa