



ELECTRONIC COPY

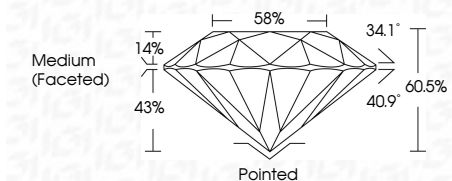
LG635400890
Report verification at igi.org



May 23, 2024
IGI Report Number LG635400890
Description LABORATORY GROWN DIAMOND
Shape and Cutting Style ROUND BRILLIANT
Measurements 9.46 - 9.49 X 5.74 MM

GRADING RESULTS

Carat Weight 3.15 CARATS
Color Grade G
Clarity Grade VS 1
Cut Grade IDEAL



ADDITIONAL GRADING INFORMATION

Polish EXCELLENT
Symmetry EXCELLENT
Fluorescence NONE
Inscription(s) IGI LG635400890

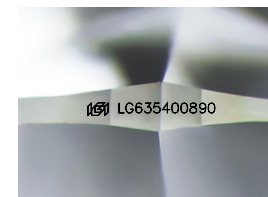
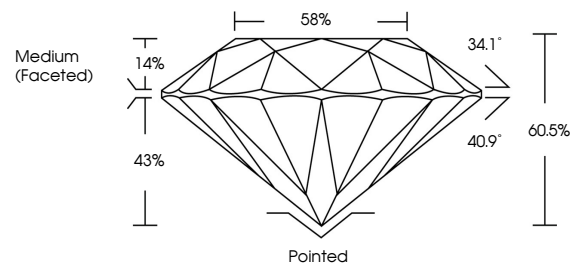
Comments: This Laboratory Grown Diamond was created by Chemical Vapor Deposition (CVD) growth process and may include post-growth treatment. Type IIa



IGI

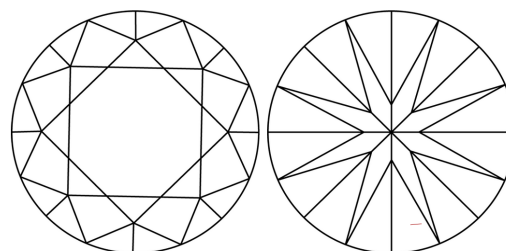
Table with 2 columns: Property and Value. Includes: May 23, 2024, IGI Report No. LG635400890, ROUND BRILLIANT, 9.46 - 9.49 X 5.74 MM, 3.15 CARATS, Color Grade G, Clarity Grade VS 1, Depth 60.5%, Table 58%, Medium (Faceted), Cutler, Polish EXCELLENT, Symmetry EXCELLENT, Fluorescence NONE, Inscription(s) IGI LG635400890. Comments: This Laboratory Grown Diamond was created by Chemical Vapor Deposition (CVD) growth process and may include post-growth treatment. Type IIa

PROPORTIONS



Sample Image Used

CLARITY CHARACTERISTICS



KEY TO SYMBOLS

Red symbols indicate internal characteristics.
Green symbols indicate external characteristics.

COLOR

D E F G H I J Faint Very Light Light

CLARITY

Table with 5 columns: IF, VS 1-2, VS 1-2, SI 1-2, I 1-3. Internally Flawless, Very Very Slightly Included, Very Slightly Included, Slightly Included, Included