



ELECTRONIC COPY

LG635401400
Report verification at igi.org



May 29, 2024
IGI Report Number **LG635401400**
Description **LABORATORY GROWN DIAMOND**
Shape and Cutting Style **EMERALD CUT**
Measurements **8.65 X 5.95 X 3.99 MM**
GRADING RESULTS
Carat Weight **2.06 CARATS**
Color Grade **FANCY VIVID BLUE**
Clarity Grade **VS 2**

LABORATORY GROWN DIAMOND REPORT

May 29, 2024
IGI Report Number **LG635401400**
Description **LABORATORY GROWN DIAMOND**
Shape and Cutting Style **EMERALD CUT**
Measurements **8.65 X 5.95 X 3.99 MM**

GRADING RESULTS

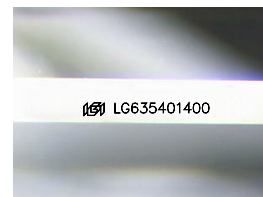
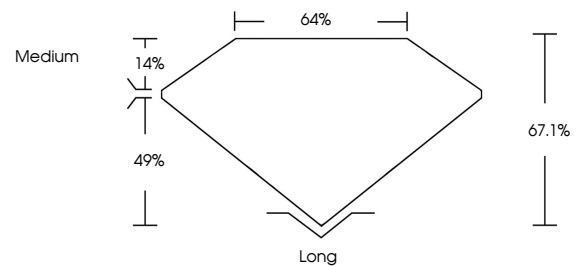
Carat Weight **2.06 CARATS**
Color Grade **FANCY VIVID BLUE**
Clarity Grade **VS 2**

ADDITIONAL GRADING INFORMATION

Polish **EXCELLENT**
Symmetry **EXCELLENT**
Fluorescence **NONE**
Inscription(s) **IGI LG635401400**

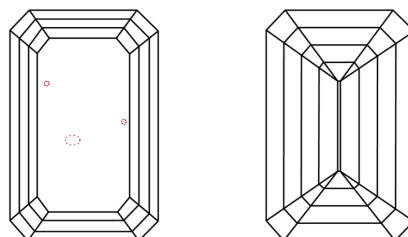
Comments: This Laboratory Grown Diamond was created by Chemical Vapor Deposition (CVD) growth process.
Indications of post-growth treatment.

PROPORTIONS



Sample Image Used

CLARITY CHARACTERISTICS



KEY TO SYMBOLS

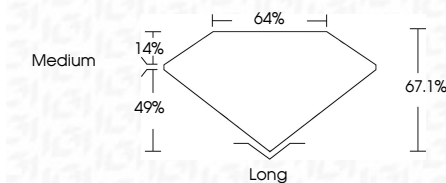
Red symbols indicate internal characteristics.
Green symbols indicate external characteristics.

COLOR

D E F G H I J Faint Very Light Light

CLARITY

IF	VS ¹⁻²	VS ¹⁻²	SI ¹⁻²	I ¹⁻³
Internally Flawless	Very Very Slightly Included	Very Slightly Included	Slightly Included	Included



ADDITIONAL GRADING INFORMATION

Polish **EXCELLENT**
Symmetry **EXCELLENT**
Fluorescence **NONE**
Inscription(s) **IGI LG635401400**
Comments: This Laboratory Grown Diamond was created by Chemical Vapor Deposition (CVD) growth process.
Indications of post-growth treatment.



IGI

May 29, 2024
IGI Report No. **LG635401400**
EMERALD CUT
2.06 CARATS
Carat Weight **8.65 X 5.95 X 3.99 MM**
Color Grade **FANCY VIVID BLUE**
Clarity Grade **VS 2**
Depth **67.1%**
Table **64%**
Girdle **Medium**
Culet **Long**
Polish **EXCELLENT**
Symmetry **EXCELLENT**
Fluorescence **NONE**
Inscription(s) **IGI LG635401400**

Comments: This Laboratory Grown Diamond was created by Chemical Vapor Deposition (CVD) growth process.
Indications of post-growth treatment.