



ELECTRONIC COPY

LABORATORY GROWN DIAMOND REPORT

May 23, 2024 IGI Report Number LG635401737 Description LABORATORY GROWN DIAMOND Shape and Cutting Style PRINCESS CUT Measurements 6.37 X 6.19 X 4.40 MM

GRADING RESULTS

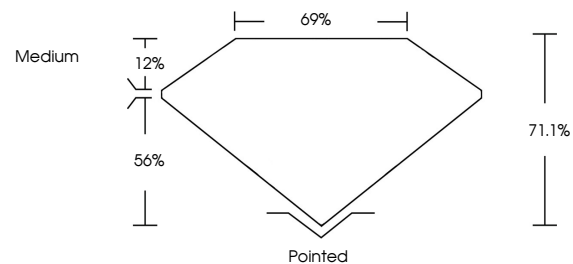
Carat Weight 1.58 CARAT Color Grade D Clarity Grade VS 1

ADDITIONAL GRADING INFORMATION

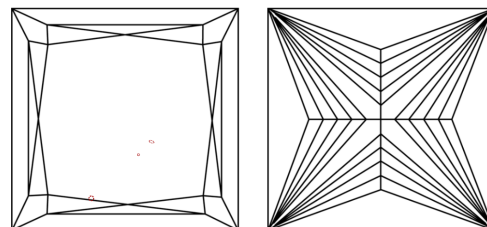
Polish EXCELLENT Symmetry EXCELLENT Fluorescence NONE Inscription(s) IGI LG635401737

Comments: This Laboratory Grown Diamond was created by Chemical Vapor Deposition (CVD) growth process and may include post-growth treatment. Type IIa

PROPORTIONS

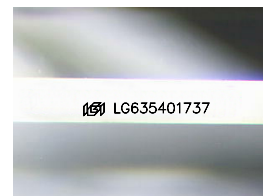


CLARITY CHARACTERISTICS



KEY TO SYMBOLS

Red symbols indicate internal characteristics. Green symbols indicate external characteristics.



Sample Image Used

COLOR

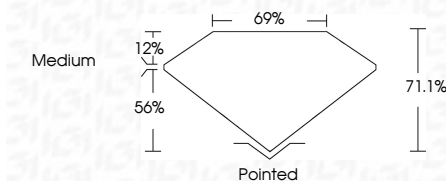
D E F G H I J Faint Very Light Light

CLARITY

IF VS 1-2 VS 1-2 SI 1-2 I 1-3 Internally Flawless Very Very Slightly Included Very Slightly Included Slightly Included Included



May 23, 2024 IGI Report Number LG635401737 Description LABORATORY GROWN DIAMOND Shape and Cutting Style PRINCESS CUT Measurements 6.37 X 6.19 X 4.40 MM GRADING RESULTS Carat Weight 1.58 CARAT Color Grade D Clarity Grade VS 1



ADDITIONAL GRADING INFORMATION

Polish EXCELLENT Symmetry EXCELLENT Fluorescence NONE Inscription(s) IGI LG635401737 Comments: This Laboratory Grown Diamond was created by Chemical Vapor Deposition (CVD) growth process and may include post-growth treatment. Type IIa



IGI



May 23, 2024 IGI Report No. LG635401737 PRINCESS CUT 1.58 CARAT D VS 1 71.1% 69% Medium Pointed EXCELLENT EXCELLENT NONE NONE IGI LG635401737

Comments: This Laboratory Grown Diamond was created by Chemical Vapor Deposition (CVD) growth process and may include post-growth treatment. Type IIa