



ELECTRONIC COPY

LG635403465
Report verification at igi.org



May 24, 2024

IGI Report Number **LG635403465**

Description **LABORATORY GROWN DIAMOND**

Shape and Cutting Style **EMERALD CUT**

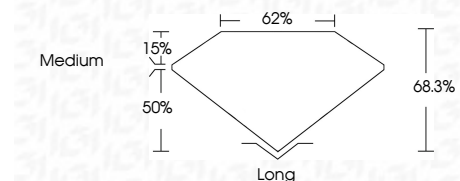
Measurements **9.53 X 7.01 X 4.79 MM**

GRADING RESULTS

Carat Weight **3.15 CARATS**

Color Grade **FANCY VIVID BLUE**

Clarity Grade **VS 2**



ADDITIONAL GRADING INFORMATION

Polish **EXCELLENT**

Symmetry **EXCELLENT**

Fluorescence **NONE**

Inscription(s) **IGI LG635403465**

Comments: This Laboratory Grown Diamond was created by Chemical Vapor Deposition (CVD) growth process. Indications of post-growth treatment.



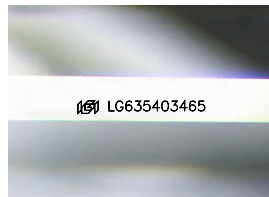
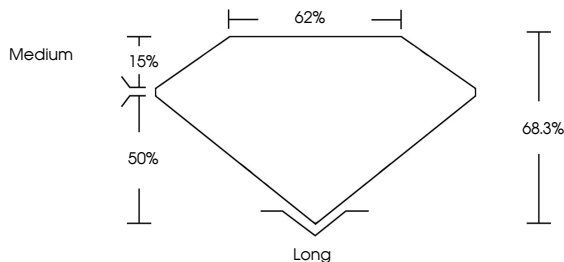
IGI

May 24, 2024	IGI Report No. LG635403465	3.15 CARATS	FANCY VIVID BLUE	VS 2	68.3%	62%	Medium	Long	EXCELLENT	EXCELLENT	NONE	IGI LG635403465
EMERALD CUT	9.53 X 7.01 X 4.79 MM	Carat Weight	Color Grade	Clarity Grade	Depth	Table	Graile	Culet	Polish	Symmetry	Fluorescence	Inscription(s)

Comments: This Laboratory Grown Diamond was created by Chemical Vapor Deposition (CVD) growth process. Indications of post-growth treatment.

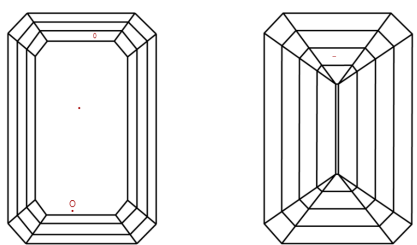
May 24, 2024
IGI Report Number **LG635403465**
Description **LABORATORY GROWN DIAMOND**
Shape and Cutting Style **EMERALD CUT**
Measurements **9.53 X 7.01 X 4.79 MM**
GRADING RESULTS
Carat Weight **3.15 CARATS**
Color Grade **FANCY VIVID BLUE**
Clarity Grade **VS 2**
ADDITIONAL GRADING INFORMATION
Polish **EXCELLENT**
Symmetry **EXCELLENT**
Fluorescence **NONE**
Inscription(s) **IGI LG635403465**
Comments: This Laboratory Grown Diamond was created by Chemical Vapor Deposition (CVD) growth process. Indications of post-growth treatment.

PROPORTIONS



Sample Image Used

CLARITY CHARACTERISTICS



KEY TO SYMBOLS

Red symbols indicate internal characteristics.
Green symbols indicate external characteristics.

COLOR

D	E	F	G	H	I	J	Faint	Very Light	Light
---	---	---	---	---	---	---	-------	------------	-------

CLARITY

IF	VS ¹⁻²	VS ¹⁻²	SI ¹⁻²	I ¹⁻³
Internally Flawless	Very Very Slightly Included	Very Slightly Included	Slightly Included	Included

