



**ELECTRONIC COPY**

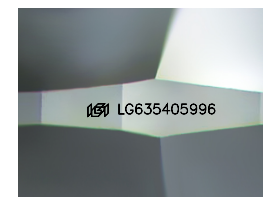
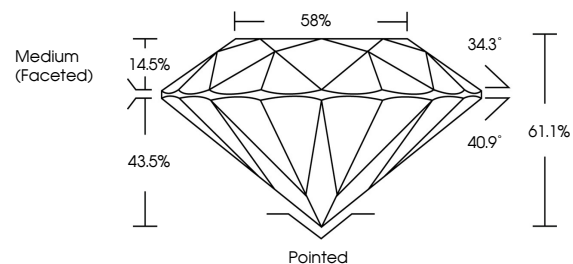
LG635405996  
Report verification at igi.org



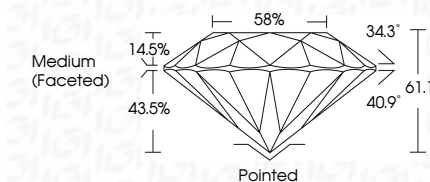
May 22, 2024  
IGI Report Number **LG635405996**  
Description **LABORATORY GROWN DIAMOND**  
Shape and Cutting Style **ROUND BRILLIANT**  
Measurements **7.95 - 8.03 X 4.89 MM**  
**GRADING RESULTS**  
Carat Weight **1.91 CARAT**  
Color Grade **H**  
Clarity Grade **VS 2**  
Cut Grade **IDEAL**

May 22, 2024  
IGI Report Number **LG635405996**  
Description **LABORATORY GROWN DIAMOND**  
Shape and Cutting Style **ROUND BRILLIANT**  
Measurements **7.95 - 8.03 X 4.89 MM**  
**GRADING RESULTS**  
Carat Weight **1.91 CARAT**  
Color Grade **H**  
Clarity Grade **VS 2**  
Cut Grade **IDEAL**

**PROPORTIONS**



Sample Image Used



**ADDITIONAL GRADING INFORMATION**

Polish **EXCELLENT**  
Symmetry **EXCELLENT**  
Fluorescence **NONE**  
Inscription(s) **IGI LG635405996**

Comments: This Laboratory Grown Diamond was created by Chemical Vapor Deposition (CVD) growth process.  
Type IIa

**ADDITIONAL GRADING INFORMATION**

Polish **EXCELLENT**  
Symmetry **EXCELLENT**  
Fluorescence **NONE**  
Inscription(s) **IGI LG635405996**  
Comments: This Laboratory Grown Diamond was created by Chemical Vapor Deposition (CVD) growth process.  
Type IIa

**COLOR**

D E F G H I J Faint Very Light Light

**CLARITY**

IF	VS <sup>1-2</sup>	VS <sup>1-2</sup>	SI <sup>1-2</sup>	I <sup>1-3</sup>
Internally Flawless	Very Very Slightly Included	Very Slightly Included	Slightly Included	Included



**IGI**

May 22, 2024  
IGI Report No **LG635405996**  
**ROUND BRILLIANT**  
7.95 - 8.03 X 4.89 MM  
Carat Weight **1.91 CARAT**  
Color Grade **H**  
Clarity Grade **VS 2**  
Cut Grade **IDEAL**  
Depth **61.1%**  
Table **58%**  
Girdle **Medium (Faceted)**  
Culet **Pointed**  
Polish **EXCELLENT**  
Symmetry **EXCELLENT**  
Fluorescence **NONE**  
Inscriptions(s) **IGI LG635405996**  
Comments: This Laboratory Grown Diamond was created by Chemical Vapor Deposition (CVD) growth process.  
Type IIa