



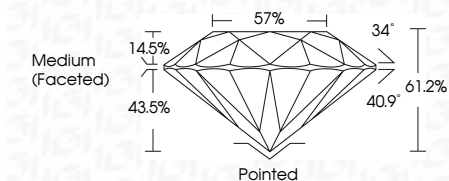
ELECTRONIC COPY

LG635406001 Report verification at igi.org



May 24, 2024 IGI Report Number LG635406001 Description LABORATORY GROWN DIAMOND Shape and Cutting Style ROUND BRILLIANT Measurements 7.99 - 8.05 X 4.91 MM

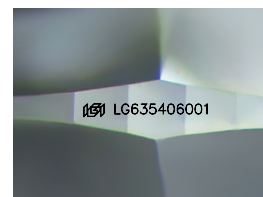
GRADING RESULTS Carat Weight 1.92 CARAT Color Grade H Clarity Grade SI 1 Cut Grade IDEAL



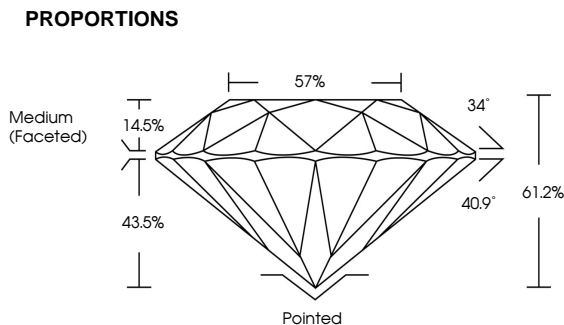
ADDITIONAL GRADING INFORMATION Polish EXCELLENT Symmetry EXCELLENT Fluorescence NONE Inscription(s) LG635406001 Comments: This Laboratory Grown Diamond was created by Chemical Vapor Deposition (CVD) growth process. Type IIa



May 24, 2024 IGI Report No LG635406001 ROUND BRILLIANT 7.99 - 8.05 X 4.91 MM 1.92 CARAT H SI 1 IDEAL 61.2% 57% Medium (Faceted) Pointed EXCELLENT EXCELLENT NONE NONE LG635406001



Sample Image Used



COLOR table with columns D, E, F, G, H, I, J, Faint, Very Light, Light

CLARITY table with columns IF, VS 1-2, VS 1-2, SI 1-2, I 1-3, Internally Flawless, Very Very Slightly Included, Very Slightly Included, Slightly Included, Included



May 24, 2024 IGI Report Number LG635406001 Description LABORATORY GROWN DIAMOND Shape and Cutting Style ROUND BRILLIANT Measurements 7.99 - 8.05 X 4.91 MM GRADING RESULTS Carat Weight 1.92 CARAT Color Grade H Clarity Grade SI 1 Cut Grade IDEAL ADDITIONAL GRADING INFORMATION Polish EXCELLENT Symmetry EXCELLENT Fluorescence NONE Inscription(s) LG635406001 Comments: This Laboratory Grown Diamond was created by Chemical Vapor Deposition (CVD) growth process. Type IIa