



ELECTRONIC COPY

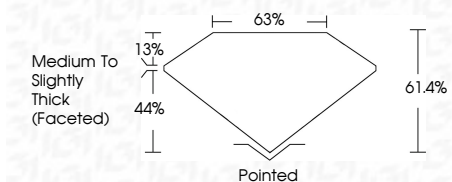
LG635406141 Report verification at igi.org



May 23, 2024 IGI Report Number LG635406141 Description LABORATORY GROWN DIAMOND Shape and Cutting Style OVAL BRILLIANT Measurements 9.75 X 7.20 X 4.42 MM

GRADING RESULTS

Carat Weight 2.02 CARATS Color Grade H Clarity Grade VS 1



ADDITIONAL GRADING INFORMATION

Polish EXCELLENT Symmetry EXCELLENT Fluorescence NONE Inscription(s) LG635406141 Comments: This Laboratory Grown Diamond was created by Chemical Vapor Deposition (CVD) growth process and may include post-growth treatment. Type IIa



May 23, 2024 IGI Report No LG635406141 OVAL BRILLIANT 2.02 CARATS H VS 1 61.4% 63% Medium to Slightly Thick (Faceted) Pointed EXCELLENT EXCELLENT NONE LG635406141

Comments: This Laboratory Grown Diamond was created by Chemical Vapor Deposition (CVD) growth process and may include post-growth treatment. Type IIa

LABORATORY GROWN DIAMOND REPORT

May 23, 2024 IGI Report Number LG635406141 Description LABORATORY GROWN DIAMOND Shape and Cutting Style OVAL BRILLIANT Measurements 9.75 X 7.20 X 4.42 MM

GRADING RESULTS

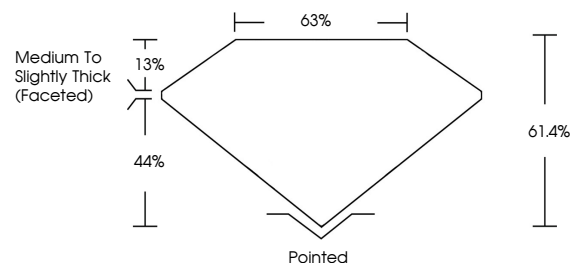
Carat Weight 2.02 CARATS Color Grade H Clarity Grade VS 1

ADDITIONAL GRADING INFORMATION

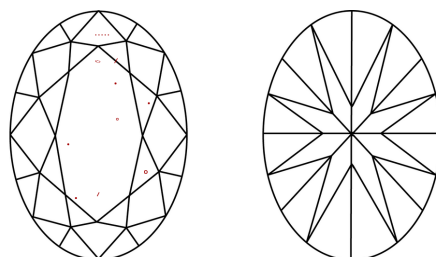
Polish EXCELLENT Symmetry EXCELLENT Fluorescence NONE Inscription(s) LG635406141

Comments: This Laboratory Grown Diamond was created by Chemical Vapor Deposition (CVD) growth process and may include post-growth treatment. Type IIa

PROPORTIONS

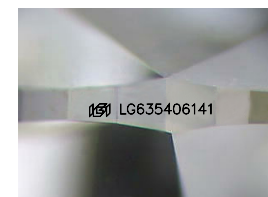


CLARITY CHARACTERISTICS



KEY TO SYMBOLS

Red symbols indicate internal characteristics. Green symbols indicate external characteristics.



Sample Image Used

COLOR

D E F G H I J Faint Very Light Light

CLARITY

IF VS 1-2 VS 1-2 SI 1-2 I 1-3 Internally Flawless Very Very Slightly Included Very Slightly Included Slightly Included Included

