



ELECTRONIC COPY

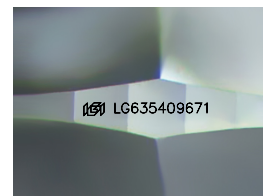
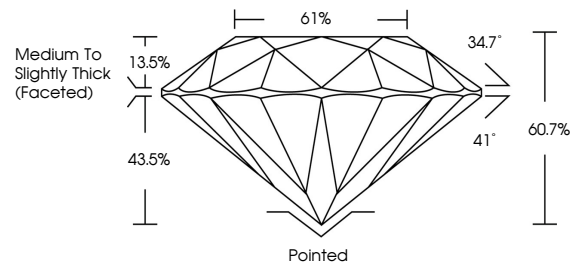
LG635409671 Report verification at igi.org



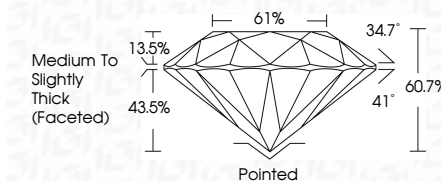
May 21, 2024
IGI Report Number LG635409671
Description LABORATORY GROWN DIAMOND
Shape and Cutting Style ROUND BRILLIANT
Measurements 8.74 - 8.77 X 5.31 MM
GRADING RESULTS
Carat Weight 2.53 CARATS
Color Grade G
Clarity Grade VVS 2
Cut Grade EXCELLENT

May 21, 2024
IGI Report Number LG635409671
Description LABORATORY GROWN DIAMOND
Shape and Cutting Style ROUND BRILLIANT
Measurements 8.74 - 8.77 X 5.31 MM
GRADING RESULTS
Carat Weight 2.53 CARATS
Color Grade G
Clarity Grade VVS 2
Cut Grade EXCELLENT

PROPORTIONS



Sample Image Used



ADDITIONAL GRADING INFORMATION

Polish EXCELLENT
Symmetry EXCELLENT
Fluorescence NONE
Inscription(s) LG635409671

ADDITIONAL GRADING INFORMATION

Polish EXCELLENT
Symmetry EXCELLENT
Fluorescence NONE
Inscription(s) LG635409671

Comments: This Laboratory Grown Diamond was created by Chemical Vapor Deposition (CVD) growth process and may include post-growth treatment. Type IIa

Comments: This Laboratory Grown Diamond was created by Chemical Vapor Deposition (CVD) growth process and may include post-growth treatment. Type IIa

COLOR

D E F G H I J Faint Very Light Light

CLARITY

IF VVS 1-2 VS 1-2 SI 1-2 I 1-3
Internally Flawless Very Very Slightly Included Very Slightly Included Slightly Included Included



IGI

May 21, 2024
IGI Report No LG635409671
ROUND BRILLIANT
8.74 - 8.77 X 5.31 MM
2.53 CARATS
Color Grade G
Clarity Grade VVS 2
Depth 60.7%
Table 61%
Girdle Medium To Slightly Thick (Faceted)
Culet Pointed
Polish EXCELLENT
Symmetry EXCELLENT
Fluorescence NONE
Inscriptions(s) IGI LG635409671

Comments: This Laboratory Grown Diamond was created by Chemical Vapor Deposition (CVD) growth process and may include post-growth treatment. Type IIa