



ELECTRONIC COPY

LABORATORY GROWN DIAMOND REPORT

| | |
|-------------------------|--------------------------|
| May 21, 2024 | |
| IGI Report Number | LG635411583 |
| Description | LABORATORY GROWN DIAMOND |
| Shape and Cutting Style | EMERALD CUT |
| Measurements | 9.19 X 6.17 X 4.22 MM |

GRADING RESULTS

| | |
|---------------|-------------|
| Carat Weight | 2.33 CARATS |
| Color Grade | F |
| Clarity Grade | VVS 2 |

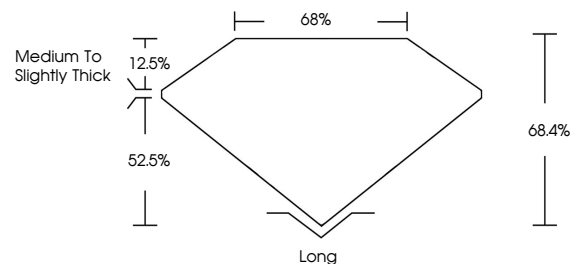
ADDITIONAL GRADING INFORMATION

| | |
|----------------|----------------|
| Polish | EXCELLENT |
| Symmetry | EXCELLENT |
| Fluorescence | NONE |
| Inscription(s) | 15 LG635411583 |

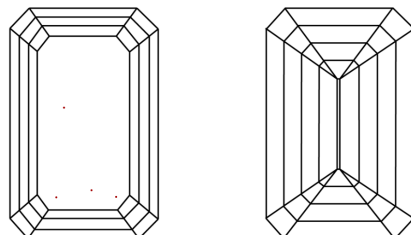
Comments: This Laboratory Grown Diamond was created by Chemical Vapor Deposition (CVD) growth process and may include post-growth treatment.
Type IIa

LG635411583
Report verification at lgi.org

PROPORTIONS

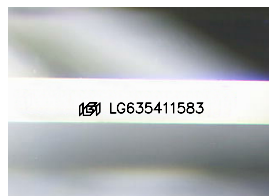


CLARITY CHARACTERISTICS



KEY TO SYMBOLS

Red symbols indicate internal characteristics.
Green symbols indicate external characteristics.



Sample Image Used

COLOR

D E F G H I J Faint Very Light Light

CLARITY

| IF | VVS ¹⁻² | VS ¹⁻² | SI ¹⁻² | I ¹⁻³ |
|---------------------|-----------------------------|------------------------|-------------------|------------------|
| Internally Flawless | Very Very Slightly Included | Very Slightly Included | Slightly Included | Included |



© IGI 2020, International Gemological Institute

FD - 10 20

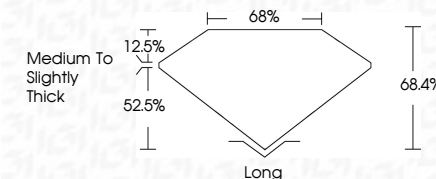
DIAMOND REPORT



| | |
|-------------------------|--------------------------|
| May 21, 2024 | |
| IGI Report Number | LG635411583 |
| Description | LABORATORY GROWN DIAMOND |
| Shape and Cutting Style | EMERALD CUT |
| Measurements | 9.19 X 6.17 X 4.22 MM |

GRADING RESULTS

| | |
|---------------|-------------|
| Carat Weight | 2.33 CARATS |
| Color Grade | F |
| Clarity Grade | VVS 2 |



ADDITIONAL GRADING INFORMATION

| | |
|----------------|---|
| Polish | EXCELLENT |
| Symmetry | EXCELLENT |
| Fluorescence | NONE |
| Inscription(s) |  LG635411583 |

Comments: This Laboratory Grown Diamond was created by Chemical Vapor Deposition (CVD) growth process and may include post-growth treatment.
Type IIa



IG

May 21, 2024
 IGI Report No LG635411583
 EVERALD CITE

| | | |
|------------------------|-------------------|--------------------------|
| 12.19 X 6.17 X 4.22 MM | Carat Weight | 2.33 CARATS |
| | Color Grade | F |
| | Clarity Grade | VVS 2 |
| | Depth | 68.4% |
| | Table | 68% |
| | Girdle | Medium To Slightly Thick |
| | Culet | Long |
| | Polish | EXCELLENT |
| | Symmetry | EXCELLENT |
| | Fluorescence | NONE |
| | Measurements (mm) | 6.011 (5.954)1.563 |

Comments:
This Laboratory Grown Diamond was created by Chemical Vapor Deposition (CVD) growth process and may include post-growth treatment.

www.igi.org

THIS DOCUMENT WAS PRODUCED WITH THE FOLLOWING SECURITY MEASURES: SPECIAL DOCUMENT PAPER, INK SCREENS, WATERMARK, BACKGROUND DESIGNS, HOLOGRAM AND OTHER SECURITY FEATURES NOT LISTED AND DO EXCEED DOCUMENT SECURITY INDUSTRY GUIDELINES