



ELECTRONIC COPY

LABORATORY GROWN DIAMOND REPORT

May 24, 2024	
IGI Report Number	LG635413174
Description	LABORATORY GROWN DIAMOND
Shape and Cutting Style	OVAL BRILLIANT
Measurements	9.58 X 6.71 X 4.18 MM

GRADING RESULTS

Carat Weight	1.71 CARAT
Color Grade	F
Clarity Grade	SI 1

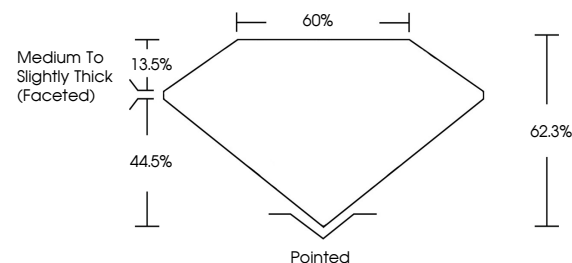
ADDITIONAL GRADING INFORMATION

Polish	EXCELLENT
Symmetry	EXCELLENT
Fluorescence	NONE
Inscription(s)	15 LG635413174

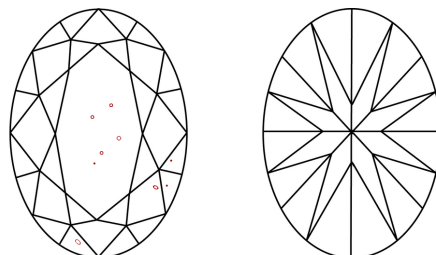
Comments: This Laboratory Grown Diamond was created by Chemical Vapor Deposition (CVD) growth process.
Type IIa

LG635413174
Report verification at igi.org

PROPORTIONS

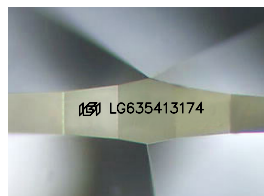


CLARITY CHARACTERISTICS



KEY TO SYMBOLS

Red symbols indicate internal characteristics.
Green symbols indicate external characteristics.



Sample Image Used

COLOR

D E F G H I J Faint Very Light Light

CLARITY

IF	VVS ^{1,2}	VS ^{1,2}	SI ^{1,2}	I ^{1,3}
Internally Flawless	Very Very Slightly Included	Very Slightly Included	Slightly Included	Included



© IGI 2020, International Gemological Institute

FD - 10 20

www.igi.org

DIAMOND REPORT



May 24, 2024	
IGI Report Number	LG635413174
Description	LABORATORY GROWN DIAMOND
Shape and Cutting Style	OVAL BRILLIANT
Measurements	9.58 X 6.71 X 4.18 MM

GRADING RESULTS

Carat Weight	1.71 CARAT
Color Grade	F
Clarity Grade	SI 1

ADDITIONAL GRADING INFORMATION

Polish	EXCELLENT
Symmetry	EXCELLENT
Fluorescence	NONE
Inscription(s)	 LG635413174

Comments: This Laboratory Grown Diamond was created by Chemical Vapor Deposition (CVD) growth process.
Type IIa



May 24, 2024
GI Report No LG635413174
COVAL BRILLIANT

5.59 X 6.71 X 4.18 MM	Carat Weight	1.71 CARAT
	Color Grade	F
	Clarity Grade	SI 1
	Depth	62.3%
	Table	60%
	Girdle	Medium To Slightly Thick (measured)
	Culet	Pointed
	Polish	EXCELLENT
	Symmetry	EXCELLENT
	Fluorescence	NONE
	Comments	4811 G55643174

Comments:
This Laboratory Grown Diamond was created by Chemical Vapor Deposition (CVD) growth process.