



**ELECTRONIC COPY**

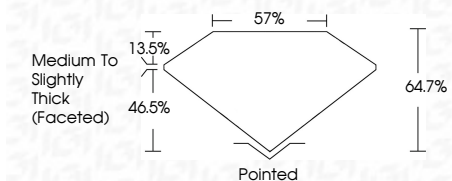
LG635414031  
Report verification at [igi.org](http://igi.org)



May 22, 2024  
IGI Report Number **LG635414031**  
Description **LABORATORY GROWN DIAMOND**  
Shape and Cutting Style **PEAR BRILLIANT**  
Measurements **8.84 X 5.53 X 3.58 MM**

**GRADING RESULTS**

Carat Weight **1.04 CARAT**  
Color Grade **G**  
Clarity Grade **SI 2**



**ADDITIONAL GRADING INFORMATION**

Polish **EXCELLENT**  
Symmetry **VERY GOOD**  
Fluorescence **NONE**  
Inscription(s) **IGI LG635414031**

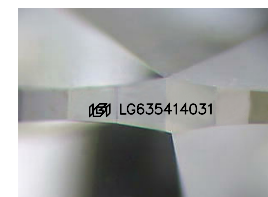
Comments: This Laboratory Grown Diamond was created by Chemical Vapor Deposition (CVD) growth process and may include post-growth treatment. Type IIa



**IGI**

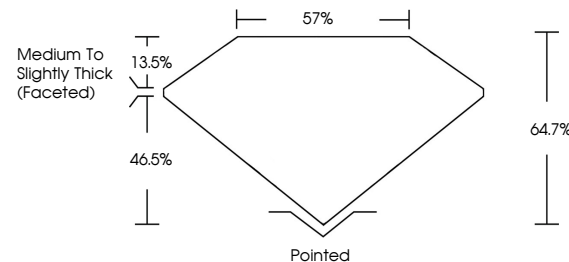
May 22, 2024  
IGI Report No. LG635414031  
**PEAR BRILLIANT**  
8.84 X 5.53 X 3.58 MM  
Carat Weight **1.04 CARAT**  
Color Grade **G**  
Clarity Grade **SI 2**  
Depth **64.7%**  
Table **57%**  
Girdle **Medium to Slightly Thick (Faceted)**  
Culet **Pointed**  
Polish **EXCELLENT**  
Symmetry **VERY GOOD**  
Fluorescence **NONE**  
Inscription(s) **IGI LG635414031**

Comments: This Laboratory Grown Diamond was created by Chemical Vapor Deposition (CVD) growth process and may include post-growth treatment. Type IIa



Sample Image Used

**PROPORTIONS**



**COLOR**

D E F G H I J Faint Very Light Light

**CLARITY**

IF	VS <sup>1-2</sup>	VS <sup>1-2</sup>	SI <sup>1-2</sup>	I <sup>1-3</sup>
Internally Flawless	Very Very Slightly Included	Very Slightly Included	Slightly Included	Included



**LABORATORY GROWN DIAMOND REPORT**

May 22, 2024  
IGI Report Number **LG635414031**  
Description **LABORATORY GROWN DIAMOND**  
Shape and Cutting Style **PEAR BRILLIANT**  
Measurements **8.84 X 5.53 X 3.58 MM**  
**GRADING RESULTS**  
Carat Weight **1.04 CARAT**  
Color Grade **G**  
Clarity Grade **SI 2**

**ADDITIONAL GRADING INFORMATION**

Polish **EXCELLENT**  
Symmetry **VERY GOOD**  
Fluorescence **NONE**  
Inscription(s) **IGI LG635414031**

Comments: This Laboratory Grown Diamond was created by Chemical Vapor Deposition (CVD) growth process and may include post-growth treatment. Type IIa