



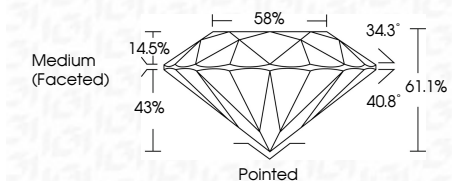
ELECTRONIC COPY

LG635416436 Report verification at igi.org



May 27, 2024 IGI Report Number LG635416436 Description LABORATORY GROWN DIAMOND Shape and Cutting Style ROUND BRILLIANT Measurements 9.06 - 9.13 X 5.56 MM

GRADING RESULTS Carat Weight 2.82 CARATS Color Grade G Clarity Grade VVS 2 Cut Grade IDEAL



ADDITIONAL GRADING INFORMATION Polish EXCELLENT Symmetry EXCELLENT Fluorescence NONE Inscription(s) IGI LG635416436 Comments: This Laboratory Grown Diamond was created by Chemical Vapor Deposition (CVD) growth process. Type IIa



May 27, 2024 IGI Report No. LG635416436 ROUND BRILLIANT 9.06 - 9.13 X 5.56 MM 2.82 CARATS G VVS 2 IDEAL 61.1% 58% Medium (Faceted) Pointed EXCELLENT EXCELLENT NONE NONE IGI LG635416436

LABORATORY GROWN DIAMOND REPORT

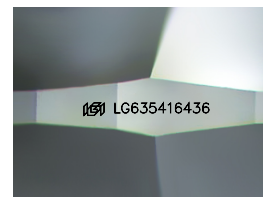
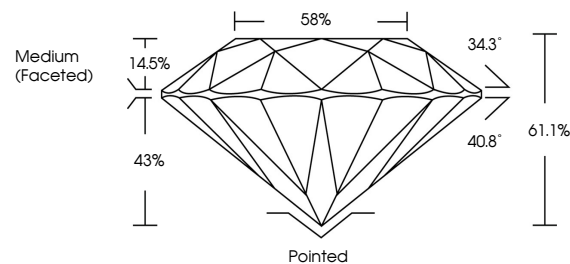
May 27, 2024 IGI Report Number LG635416436 Description LABORATORY GROWN DIAMOND Shape and Cutting Style ROUND BRILLIANT Measurements 9.06 - 9.13 X 5.56 MM

GRADING RESULTS Carat Weight 2.82 CARATS Color Grade G Clarity Grade VVS 2 Cut Grade IDEAL

ADDITIONAL GRADING INFORMATION Polish EXCELLENT Symmetry EXCELLENT Fluorescence NONE Inscription(s) IGI LG635416436

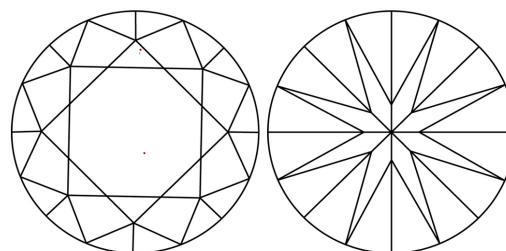
Comments: This Laboratory Grown Diamond was created by Chemical Vapor Deposition (CVD) growth process. Type IIa

PROPORTIONS



Sample Image Used

CLARITY CHARACTERISTICS



KEY TO SYMBOLS

Red symbols indicate internal characteristics. Green symbols indicate external characteristics.

COLOR

D E F G H I J Faint Very Light Light

CLARITY

IF VVS 1-2 VS 1-2 SI 1-2 I 1-3 Internally Flawless Very Very Slightly Included Very Slightly Included Slightly Included Included

