



**INTERNATIONAL  
GEMOLOGICAL  
INSTITUTE**

**ELECTRONIC COPY**

**LG635417784**

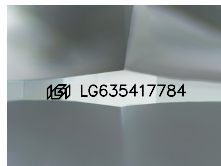


May 21, 2024

**IGI Report Number** LG635417784  
**ROUND BRILLIANT**  
**LABORATORY GROWN DIAMOND**  
**5.36 - 5.41 X 3.27 MM**  
**Carat Weight** 0.57 CARAT  
**Color Grade** D  
**Clarity Grade** VS 1  
**Cut Grade** IDEAL  
**Polish** EXCELLENT  
**Symmetry** EXCELLENT  
**Fluorescence** NONE  
**Inscription(s)** IGI LG635417784

**LABORATORY GROWN DIAMOND REPORT**

May 21, 2024  
 IGI Report Number **LG635417784**  
 Description **LABORATORY GROWN DIAMOND**  
 Shape and Cutting Style **ROUND BRILLIANT**  
 Measurements **5.36 - 5.41 X 3.27 MM**



Sample Image Used

Comments: As Grown - No indication of post-growth treatment. This Laboratory Grown Diamond was created by High Pressure High Temperature (HPHT) growth process. Type II

**GRADING RESULTS**

**Carat Weight** 0.57 CARAT  
**Color Grade** D  
**Clarity Grade** VS 1  
**Cut Grade** IDEAL

**ADDITIONAL GRADING INFORMATION**

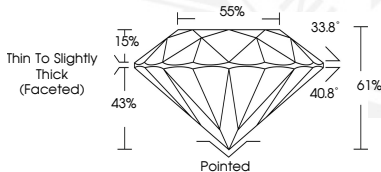
**Polish** EXCELLENT  
**Symmetry** EXCELLENT  
**Fluorescence** NONE  
**Inscription(s)** IGI LG635417784

Comments: As Grown - No indication of post-growth treatment. This Laboratory Grown Diamond was created by High Pressure High Temperature (HPHT) growth process. Type II



May 21, 2024

**IGI Report Number** LG635417784  
**ROUND BRILLIANT**  
**LABORATORY GROWN DIAMOND**  
**5.36 - 5.41 X 3.27 MM**  
**Carat Weight** 0.57 CARAT  
**Color Grade** D  
**Clarity Grade** VS 1  
**Cut Grade** IDEAL  
**Polish** EXCELLENT  
**Symmetry** EXCELLENT  
**Fluorescence** NONE  
**Inscription(s)** IGI LG635417784



THIS DOCUMENT WAS PRODUCED WITH THE FOLLOWING SECURITY MEASURES: SPECIAL DOCUMENT PAPER, INK SCREENS, WATERMARK, BACKGROUND DESIGN, HOLOGRAM AND OTHER SECURITY FEATURES NOT LISTED AND DO EXCEED DOCUMENT SECURITY INDUSTRY GUIDELINES.

For terms & conditions and to verify this report, please visit [www.igi.org](http://www.igi.org)