



ELECTRONIC COPY

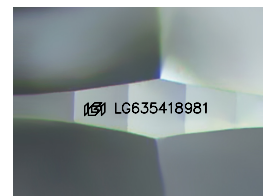
LG635418981
Report verification at igi.org



May 25, 2024
IGI Report Number **LG635418981**
Description **LABORATORY GROWN DIAMOND**
Shape and Cutting Style **CUSHION BRILLIANT**
Measurements **8.16 X 6.11 X 3.98 MM**

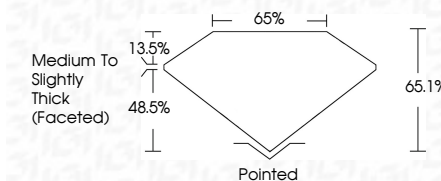
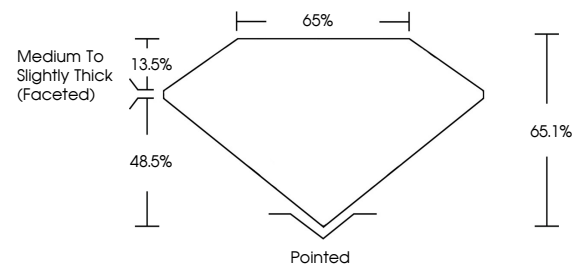
GRADING RESULTS

Carat Weight **1.77 CARAT**
Color Grade **F**
Clarity Grade **VS 2**



Sample Image Used

PROPORTIONS



ADDITIONAL GRADING INFORMATION

Polish **EXCELLENT**
Symmetry **EXCELLENT**
Fluorescence **NONE**

Inscription(s) **IGI LG635418981**

Comments: This Laboratory Grown Diamond was created by Chemical Vapor Deposition (CVD) growth process.
Type IIa

COLOR

D E F G H I J Faint Very Light Light

CLARITY

IF	VS ¹⁻²	VS ¹⁻²	SI ¹⁻²	I ¹⁻³
Internally Flawless	Very Very Slightly Included	Very Slightly Included	Slightly Included	Included



IGI

May 25, 2024
IGI Report No. LG635418981
CUSHION BRILLIANT
8.16 X 6.11 X 3.98 MM
Carat Weight **1.77 CARAT**
Color Grade **F**
Clarity Grade **VS 2**
Depth **65.1%**
Table **65%**
Girdle **Medium to Slightly Thick (Faceted)**
Culet **Pointed**
Polish **EXCELLENT**
Symmetry **EXCELLENT**
Fluorescence **NONE**
Inscription(s) **IGI LG635418981**

Comments: This Laboratory Grown Diamond was created by Chemical Vapor Deposition (CVD) growth process.
Type IIa