



ELECTRONIC COPY

LABORATORY GROWN DIAMOND REPORT

May 23, 2024  
IGI Report Number LG635422107  
Description LABORATORY GROWN DIAMOND  
Shape and Cutting Style PRINCESS CUT  
Measurements 7.50 X 7.43 X 5.20 MM

GRADING RESULTS

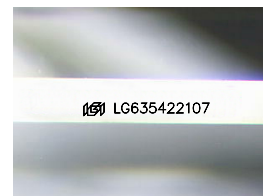
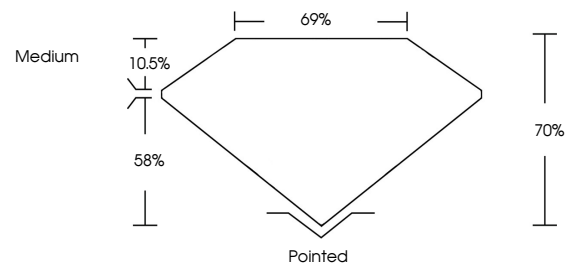
Carat Weight 2.42 CARATS  
Color Grade G  
Clarity Grade VVS 2

ADDITIONAL GRADING INFORMATION

Polish EXCELLENT  
Symmetry EXCELLENT  
Fluorescence NONE  
Inscription(s) IGI LG635422107

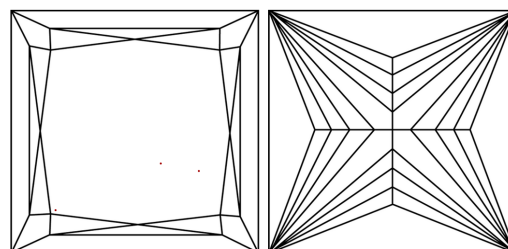
Comments: This Laboratory Grown Diamond was created by Chemical Vapor Deposition (CVD) growth process.  
Type IIa

PROPORTIONS



Sample Image Used

CLARITY CHARACTERISTICS



KEY TO SYMBOLS

Red symbols indicate internal characteristics.  
Green symbols indicate external characteristics.

COLOR

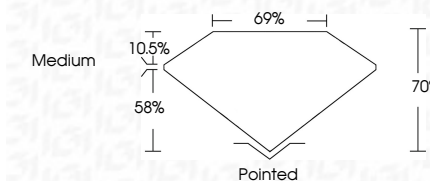
D E F G H I J Faint Very Light Light

CLARITY

IF VS 1-2 VS 1-2 SI 1-2 I 1-3  
Internally Flawless Very Very Slightly Included Very Slightly Included Slightly Included Included



May 23, 2024  
IGI Report Number LG635422107  
Description LABORATORY GROWN DIAMOND  
Shape and Cutting Style PRINCESS CUT  
Measurements 7.50 X 7.43 X 5.20 MM  
GRADING RESULTS  
Carat Weight 2.42 CARATS  
Color Grade G  
Clarity Grade VVS 2



ADDITIONAL GRADING INFORMATION

Polish EXCELLENT  
Symmetry EXCELLENT  
Fluorescence NONE  
Inscription(s) IGI LG635422107  
Comments: This Laboratory Grown Diamond was created by Chemical Vapor Deposition (CVD) growth process.  
Type IIa



IGI



May 23, 2024  
IGI Report No. LG635422107  
PRINCESS CUT  
7.50 X 7.43 X 5.20 MM  
Carat Weight 2.42 CARATS  
Color Grade G  
Clarity Grade VVS 2  
Depth 58%  
Table 10.5%  
Girdle 69%  
Medium  
Pointed  
Polish EXCELLENT  
Symmetry EXCELLENT  
Fluorescence NONE  
Inscriptions(s) IGI LG635422107

Comments: This Laboratory Grown Diamond was created by Chemical Vapor Deposition (CVD) growth process.  
Type IIa