



ELECTRONIC COPY

LABORATORY GROWN DIAMOND REPORT

May 22, 2024
IGI Report Number LG635422253
Description LABORATORY GROWN DIAMOND
Shape and Cutting Style PRINCESS CUT
Measurements 7.85 X 7.66 X 5.45 MM

GRADING RESULTS

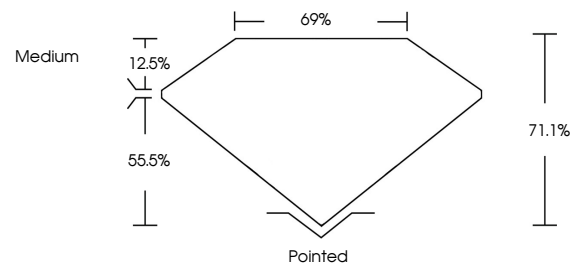
Carat Weight 2.89 CARATS
Color Grade F
Clarity Grade VS 2

ADDITIONAL GRADING INFORMATION

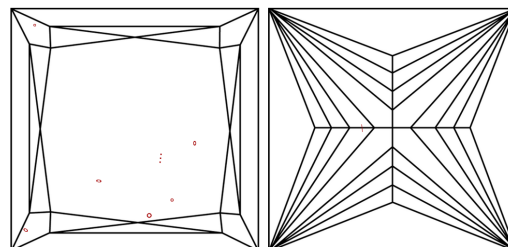
Polish EXCELLENT
Symmetry EXCELLENT
Fluorescence NONE
Inscription(s) IGI LG635422253

Comments: This Laboratory Grown Diamond was created by Chemical Vapor Deposition (CVD) growth process.
Type IIa

PROPORTIONS

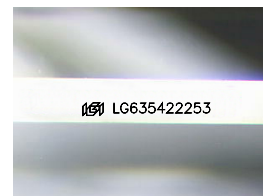


CLARITY CHARACTERISTICS



KEY TO SYMBOLS

Red symbols indicate internal characteristics.
Green symbols indicate external characteristics.



Sample Image Used

COLOR

D E F G H I J Faint Very Light Light

CLARITY

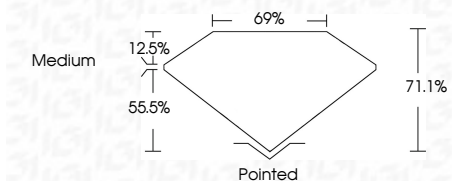
IF VS 1-2 VS 1-2 SI 1-2 I 1-3
Internally Flawless Very Very Slightly Included Very Slightly Included Slightly Included Included



May 22, 2024
IGI Report Number LG635422253
Description LABORATORY GROWN DIAMOND
Shape and Cutting Style PRINCESS CUT
Measurements 7.85 X 7.66 X 5.45 MM

GRADING RESULTS

Carat Weight 2.89 CARATS
Color Grade F
Clarity Grade VS 2



ADDITIONAL GRADING INFORMATION

Polish EXCELLENT
Symmetry EXCELLENT
Fluorescence NONE
Inscription(s) IGI LG635422253
Comments: This Laboratory Grown Diamond was created by Chemical Vapor Deposition (CVD) growth process.
Type IIa



IGI



May 22, 2024
IGI Report No. LG635422253
PRINCESS CUT
2.89 CARATS
F
2.89 CARATS
Color Grade F
Clarity Grade VS 2
Depth 71.1%
Table 12.5%
Girdle 69%
Medium
Pointed
Polish EXCELLENT
Symmetry EXCELLENT
Fluorescence NONE
Inscription(s) IGI LG635422253
Comments: This Laboratory Grown Diamond was created by Chemical Vapor Deposition (CVD) growth process.
Type IIa