



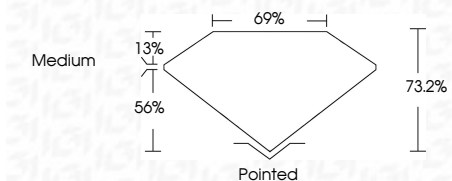
**ELECTRONIC COPY**

LG635422395  
Report verification at igi.org



May 23, 2024  
IGI Report Number **LG635422395**  
Description **LABORATORY GROWN DIAMOND**  
Shape and Cutting Style **PRINCESS CUT**  
Measurements **8.22 X 7.98 X 5.84 MM**

**GRADING RESULTS**  
Carat Weight **3.36 CARATS**  
Color Grade **E**  
Clarity Grade **VS 2**



**ADDITIONAL GRADING INFORMATION**  
Polish **EXCELLENT**  
Symmetry **EXCELLENT**  
Fluorescence **NONE**  
Inscription(s) **IGI LG635422395**  
Comments: This Laboratory Grown Diamond was created by Chemical Vapor Deposition (CVD) growth process.  
Type IIa



May 23, 2024  
IGI Report No. LG635422395  
**PRINCESS CUT**  
8.22 X 7.98 X 5.84 MM  
3.36 CARATS  
E  
VS 2  
73.2%  
56%  
69%  
Medium  
Pointed  
EXCELLENT  
EXCELLENT  
NONE  
IGI LG635422395  
Comments: This Laboratory Grown Diamond was created by Chemical Vapor Deposition (CVD) growth process.  
Type IIa

**LABORATORY GROWN DIAMOND REPORT**

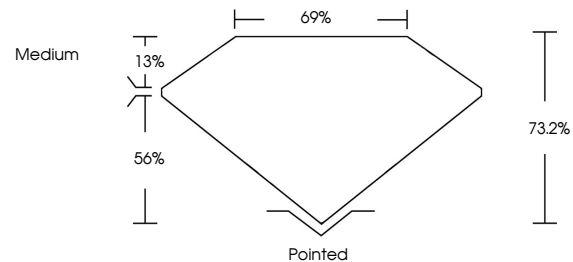
May 23, 2024  
IGI Report Number **LG635422395**  
Description **LABORATORY GROWN DIAMOND**  
Shape and Cutting Style **PRINCESS CUT**  
Measurements **8.22 X 7.98 X 5.84 MM**

**GRADING RESULTS**  
Carat Weight **3.36 CARATS**  
Color Grade **E**  
Clarity Grade **VS 2**

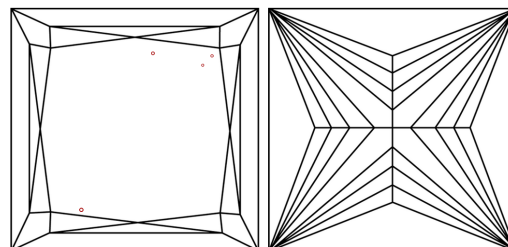
**ADDITIONAL GRADING INFORMATION**  
Polish **EXCELLENT**  
Symmetry **EXCELLENT**  
Fluorescence **NONE**  
Inscription(s) **IGI LG635422395**

Comments: This Laboratory Grown Diamond was created by Chemical Vapor Deposition (CVD) growth process.  
Type IIa

**PROPORTIONS**

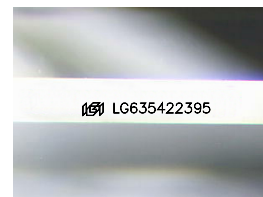


**CLARITY CHARACTERISTICS**



**KEY TO SYMBOLS**

Red symbols indicate internal characteristics.  
Green symbols indicate external characteristics.



Sample Image Used

**COLOR**

D E F G H I J Faint Very Light Light

**CLARITY**

IF	VS <sup>1-2</sup>	VS <sup>1-2</sup>	SI <sup>1-2</sup>	I <sup>1-3</sup>
Internally Flawless	Very Very Slightly Included	Very Slightly Included	Slightly Included	Included

