



**ELECTRONIC COPY**

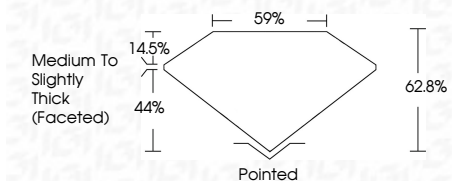
LG635422449  
Report verification at igi.org



May 25, 2024  
IGI Report Number **LG635422449**  
Description **LABORATORY GROWN DIAMOND**  
Shape and Cutting Style **OVAL BRILLIANT**  
Measurements **11.46 X 7.66 X 4.81 MM**

**GRADING RESULTS**

Carat Weight **2.67 CARATS**  
Color Grade **H**  
Clarity Grade **SI 1**



**ADDITIONAL GRADING INFORMATION**

Polish **EXCELLENT**  
Symmetry **EXCELLENT**  
Fluorescence **NONE**  
Inscription(s) **IGI LG635422449**  
Comments: This Laboratory Grown Diamond was created by Chemical Vapor Deposition (CVD) growth process. Type IIa



**IGI**

May 25, 2024  
IGI Report No LG635422449  
OVAL BRILLIANT  
11.46 X 7.66 X 4.81 MM  
2.67 CARATS  
H  
SI 1  
62.0%  
62.8%  
Medium to Slightly Thick (Faceted)  
Pointed  
EXCELLENT  
EXCELLENT  
NONE  
IGI LG635422449

Comments: This Laboratory Grown Diamond was created by Chemical Vapor Deposition (CVD) growth process. Type IIa

**LABORATORY GROWN DIAMOND REPORT**

May 25, 2024  
IGI Report Number **LG635422449**  
Description **LABORATORY GROWN DIAMOND**  
Shape and Cutting Style **OVAL BRILLIANT**  
Measurements **11.46 X 7.66 X 4.81 MM**

**GRADING RESULTS**

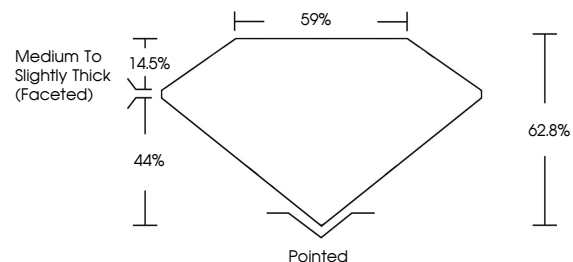
Carat Weight **2.67 CARATS**  
Color Grade **H**  
Clarity Grade **SI 1**

**ADDITIONAL GRADING INFORMATION**

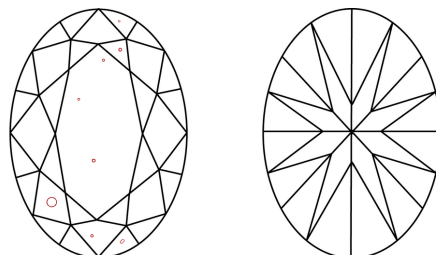
Polish **EXCELLENT**  
Symmetry **EXCELLENT**  
Fluorescence **NONE**  
Inscription(s) **IGI LG635422449**

Comments: This Laboratory Grown Diamond was created by Chemical Vapor Deposition (CVD) growth process. Type IIa

**PROPORTIONS**

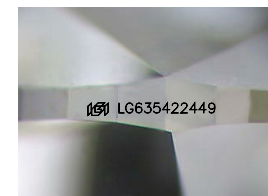


**CLARITY CHARACTERISTICS**



**KEY TO SYMBOLS**

Red symbols indicate internal characteristics.  
Green symbols indicate external characteristics.



Sample Image Used

**COLOR**

D E F G H I J Faint Very Light Light

**CLARITY**

IF	VS <sup>1-2</sup>	VS <sup>1-2</sup>	SI <sup>1-2</sup>	I <sup>1-3</sup>
Internally Flawless	Very Very Slightly Included	Very Slightly Included	Slightly Included	Included

