



ELECTRONIC COPY

LG635423627 Report verification at igi.org

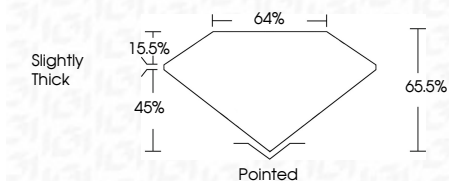


May 23, 2024 IGI Report Number LG635423627 Description LABORATORY GROWN DIAMOND Shape and Cutting Style CUT CORNERED RECTANGULAR MODIFIED BRILLIANT

Measurements 9.16 X 6.18 X 4.05 MM

GRADING RESULTS

Carat Weight 2.10 CARATS Color Grade D Clarity Grade VVS 1



ADDITIONAL GRADING INFORMATION

Polish EXCELLENT Symmetry EXCELLENT Fluorescence NONE Inscription(s) LG635423627

Comments: This Laboratory Grown Diamond was created by Chemical Vapor Deposition (CVD) growth process and may include post-growth treatment. Type IIa



May 23, 2024 IGI Report No. LG635423627 CUT CORNERED RECT. MODIFIED BRILLIANT 9.16 X 6.18 X 4.05 MM 2.10 CARATS D VVS 1 65.5% 64% Slightly Thick Pointed EXCELLENT EXCELLENT NONE LG635423627

Comments: This Laboratory Grown Diamond was created by Chemical Vapor Deposition (CVD) growth process and may include post-growth treatment. Type IIa

LABORATORY GROWN DIAMOND REPORT

May 23, 2024 IGI Report Number LG635423627 Description LABORATORY GROWN DIAMOND Shape and Cutting Style CUT CORNERED RECTANGULAR MODIFIED BRILLIANT Measurements 9.16 X 6.18 X 4.05 MM

GRADING RESULTS

Carat Weight 2.10 CARATS Color Grade D Clarity Grade VVS 1

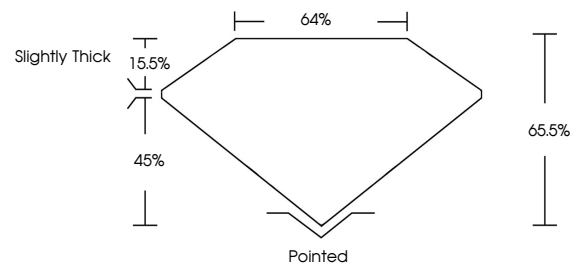
ADDITIONAL GRADING INFORMATION

Polish EXCELLENT Symmetry EXCELLENT Fluorescence NONE

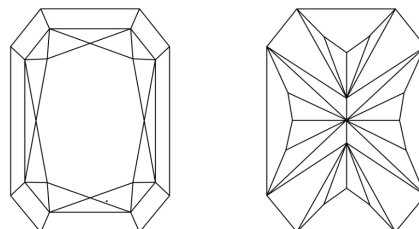
Inscription(s) LG635423627

Comments: This Laboratory Grown Diamond was created by Chemical Vapor Deposition (CVD) growth process and may include post-growth treatment. Type IIa

PROPORTIONS

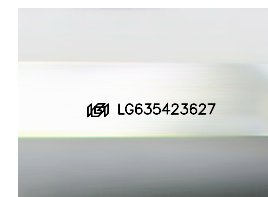


CLARITY CHARACTERISTICS



KEY TO SYMBOLS

Red symbols indicate internal characteristics. Green symbols indicate external characteristics.



Sample Image Used

COLOR

D E F G H I J Faint Very Light Light

CLARITY

IF VVS 1-2 VS 1-2 SI 1-2 I 1-3 Internally Flawless Very Very Slightly Included Very Slightly Included Slightly Included Included

