



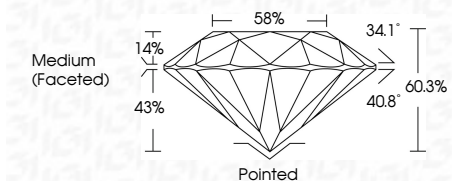
ELECTRONIC COPY

LG635425126 Report verification at igi.org



May 25, 2024 IGI Report Number LG635425126 Description LABORATORY GROWN DIAMOND Shape and Cutting Style ROUND BRILLIANT Measurements 10.07 - 10.10 X 6.08 MM

GRADING RESULTS Carat Weight 3.76 CARATS Color Grade G Clarity Grade VS 2 Cut Grade IDEAL



ADDITIONAL GRADING INFORMATION Polish EXCELLENT Symmetry EXCELLENT Fluorescence NONE Inscription(s) IGI LG635425126 Comments: This Laboratory Grown Diamond was created by Chemical Vapor Deposition (CVD) growth process. Type IIa



May 25, 2024 IGI Report No. LG635425126 ROUND BRILLIANT 10.07 - 10.10 X 6.08 MM 3.76 CARATS G VS 2 IDEAL 60.3% 58% Medium (Faceted) Pointed EXCELLENT EXCELLENT NONE NONE IGI LG635425126

LABORATORY GROWN DIAMOND REPORT

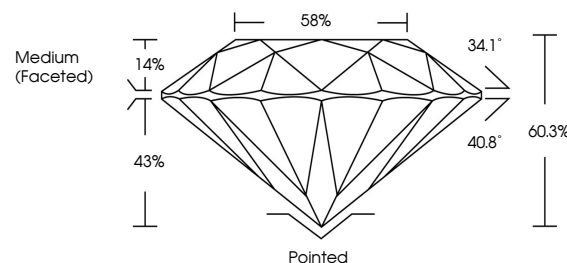
May 25, 2024 IGI Report Number LG635425126 Description LABORATORY GROWN DIAMOND Shape and Cutting Style ROUND BRILLIANT Measurements 10.07 - 10.10 X 6.08 MM

GRADING RESULTS Carat Weight 3.76 CARATS Color Grade G Clarity Grade VS 2 Cut Grade IDEAL

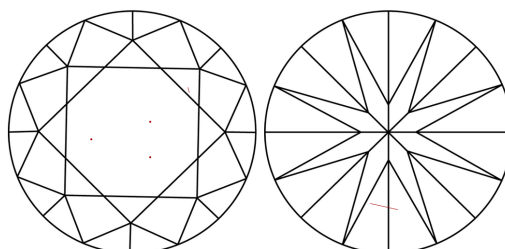
ADDITIONAL GRADING INFORMATION Polish EXCELLENT Symmetry EXCELLENT Fluorescence NONE Inscription(s) IGI LG635425126

Comments: This Laboratory Grown Diamond was created by Chemical Vapor Deposition (CVD) growth process. Type IIa

PROPORTIONS

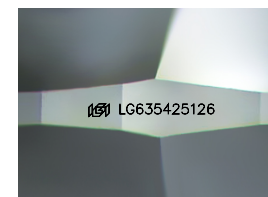


CLARITY CHARACTERISTICS



KEY TO SYMBOLS

Red symbols indicate internal characteristics. Green symbols indicate external characteristics.



Sample Image Used

COLOR

D E F G H I J Faint Very Light Light

CLARITY

IF VS 1-2 VS 1-2 SI 1-2 I 1-3 Internally Flawless Very Very Slightly Included Very Slightly Included Slightly Included Included



Comments: This Laboratory Grown Diamond was created by Chemical Vapor Deposition (CVD) growth process. Type IIa