



ELECTRONIC COPY

LG635425869 Report verification at igi.org



May 23, 2024 IGI Report Number LG635425869 Description LABORATORY GROWN DIAMOND Shape and Cutting Style CUT CORNERED RECTANGULAR MODIFIED BRILLIANT Measurements 7.48 X 5.40 X 3.62 MM GRADING RESULTS Carat Weight 1.29 CARAT Color Grade D Clarity Grade VS 1

LABORATORY GROWN DIAMOND REPORT

May 23, 2024 IGI Report Number LG635425869 Description LABORATORY GROWN DIAMOND Shape and Cutting Style CUT CORNERED RECTANGULAR MODIFIED BRILLIANT Measurements 7.48 X 5.40 X 3.62 MM

GRADING RESULTS

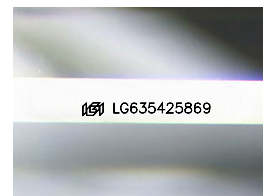
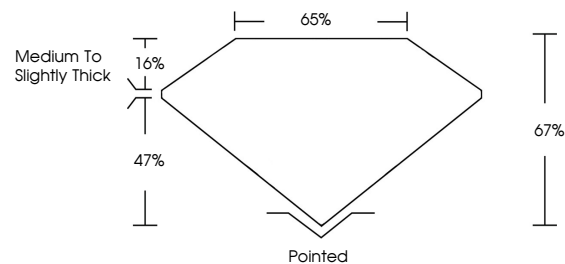
Carat Weight 1.29 CARAT Color Grade D Clarity Grade VS 1

ADDITIONAL GRADING INFORMATION

Polish VERY GOOD Symmetry EXCELLENT Fluorescence NONE Inscription(s) IGI LG635425869

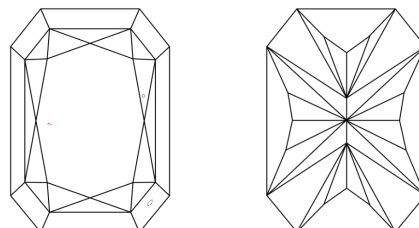
Comments: This Laboratory Grown Diamond was created by Chemical Vapor Deposition (CVD) growth process. Type IIa

PROPORTIONS



Sample Image Used

CLARITY CHARACTERISTICS



KEY TO SYMBOLS

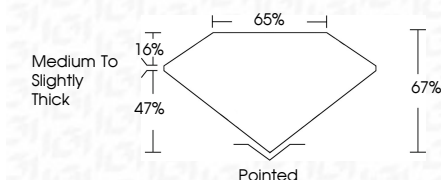
Red symbols indicate internal characteristics. Green symbols indicate external characteristics.

COLOR

D E F G H I J Faint Very Light Light

CLARITY

IF VS 1-2 VS 1-2 SI 1-2 I 1-3 Internally Flawless Very Very Slightly Included Very Slightly Included Slightly Included Included



ADDITIONAL GRADING INFORMATION

Polish VERY GOOD Symmetry EXCELLENT Fluorescence NONE Inscription(s) IGI LG635425869 Comments: This Laboratory Grown Diamond was created by Chemical Vapor Deposition (CVD) growth process. Type IIa



IGI



May 23, 2024 IGI Report No. LG635425869 CUT CORNERED RECT. MODIFIED BRILLIANT 1.29 CARAT D VS 1 67% 65% Medium to Slightly Thick Pointed VERY GOOD EXCELLENT NONE NONE IGI LG635425869

Comments: This Laboratory Grown Diamond was created by Chemical Vapor Deposition (CVD) growth process. Type IIa