



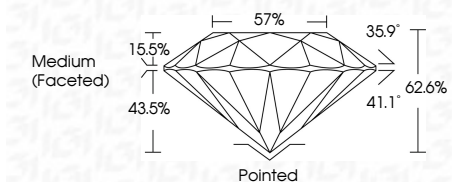
ELECTRONIC COPY

LG635427434 Report verification at igi.org



May 27, 2024 IGI Report Number LG635427434 Description LABORATORY GROWN DIAMOND Shape and Cutting Style ROUND BRILLIANT Measurements 10.15 - 10.21 X 6.37 MM

GRADING RESULTS Carat Weight 4.07 CARATS Color Grade G Clarity Grade VS 1 Cut Grade EXCELLENT



ADDITIONAL GRADING INFORMATION Polish EXCELLENT Symmetry EXCELLENT Fluorescence NONE Inscription(s) LG635427434 Comments: This Laboratory Grown Diamond was created by Chemical Vapor Deposition (CVD) growth process. Type IIa



May 27, 2024 IGI Report No LG635427434 ROUND BRILLIANT 10.15 - 10.21 X 6.37 MM 4.07 CARATS G VS 1 EXCELLENT 62.6% 57% Medium (Faceted) Pointed EXCELLENT EXCELLENT NONE NONE LG635427434

Comments: This Laboratory Grown Diamond was created by Chemical Vapor Deposition (CVD) growth process. Type IIa

LABORATORY GROWN DIAMOND REPORT

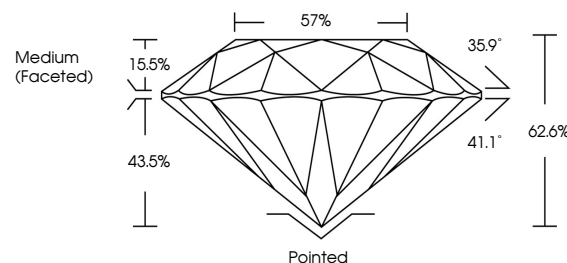
May 27, 2024 IGI Report Number LG635427434 Description LABORATORY GROWN DIAMOND Shape and Cutting Style ROUND BRILLIANT Measurements 10.15 - 10.21 X 6.37 MM

GRADING RESULTS Carat Weight 4.07 CARATS Color Grade G Clarity Grade VS 1 Cut Grade EXCELLENT

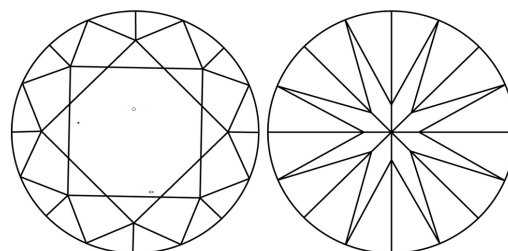
ADDITIONAL GRADING INFORMATION Polish EXCELLENT Symmetry EXCELLENT Fluorescence NONE Inscription(s) LG635427434

Comments: This Laboratory Grown Diamond was created by Chemical Vapor Deposition (CVD) growth process. Type IIa

PROPORTIONS

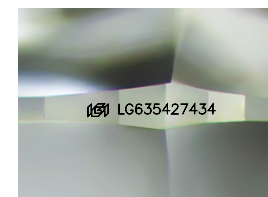


CLARITY CHARACTERISTICS



KEY TO SYMBOLS

Red symbols indicate internal characteristics. Green symbols indicate external characteristics.



Sample Image Used

COLOR

D E F G H I J Faint Very Light Light

CLARITY

IF WVS 1-2 VS 1-2 SI 1-2 I 1-3 Internally Flawless Very Very Slightly Included Very Slightly Included Slightly Included Included

